

MARLON B. ALEJANDRO
RFPN - PHILIPPINES

(G. III)

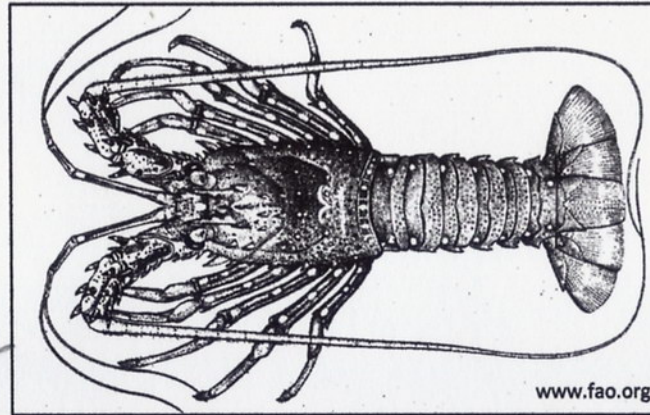
TROPICAL INDO-PACIFIC REGION, ROCKY AND CORAL REEF



The South China Sea Fisheries Refugia Project: Fish Life-Cycle and Critical Habitat Linkages

AND CORAL REEF

Life - History Phase	Known Habitat/ Critical Area	Threat
Early - life history (LARVAE)	FLOATING IN THE WATER COLUMN WHEN METAMORPHOUS - FOUND IN FLOATING DEBRIS	BY JUVENILES - OF PELAGIC SPECIES
Juvenile	FOUND IN FLOATING DEBRIS, CORAL REEF AREAS / BOULDERS	OVERHARVESTING OF SPECIES
Pre - recruit	ROCK CREVICES / BOULDERS / REEF AREAS	USUALLY BY CYANIDE FISHING,
Adult	ROCK CREVICES / BOULDERS, REEF AREAS	HABITAT DEGRADATION
Spawning	REEF AREAS / BOULDERS	CYANIDE FISHING OPENLY CATCH W/ AQUARIUM FISHES



www.fao.org

Longlegged spiny lobster (*Panulirus longipes*)

IUCN Red List HAS ACCESSED ITS CONSERVATION STATUS AS BEING OF LEAST CONCERN

Activity descriptor: Identifying fisheries *refugia* requires an understanding of the critical linkages between the life-cycles of fish species and their habitats. This inception workshop activity aims to stimulate discussion among participants of the fisheries *refugia* concept and benchmark our collective understanding of how economically important species utilize coastal and marine areas at various stages of their life-cycles. Participants are also invited to identify any known threats to fish life-cycle and habitat linkages for the species they have been assigned.

8-10/11