



INCEPTION WORKSHOP FOR THE SEAFDEC/UNEP/GEF  
FISHERIES *REFUGIA* PROJECT

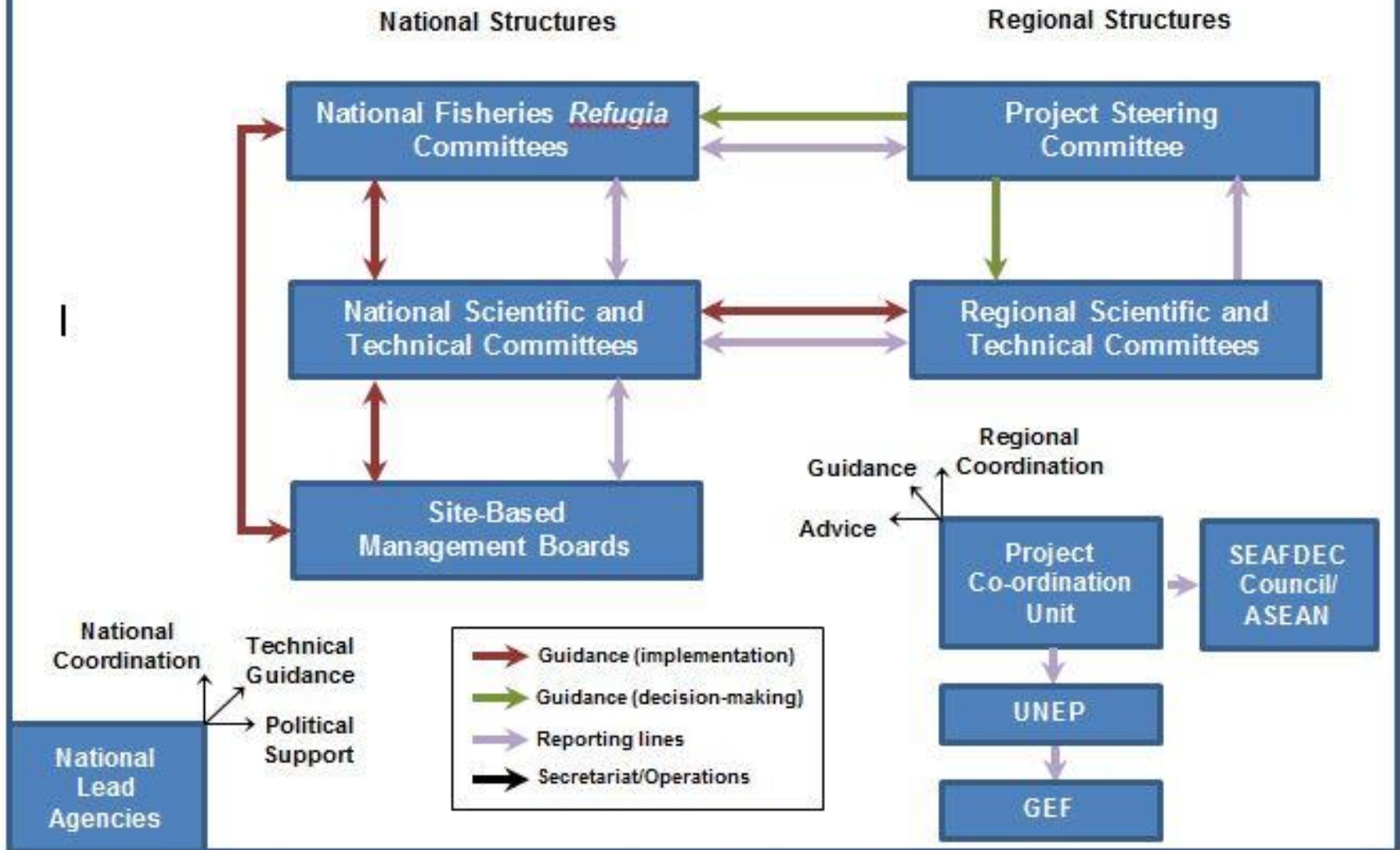
# ESTABLISHMENT AND OPERATION OF A REGIONAL SYSTEM OF FISHERIES *REFUGIA* IN THE SOUTH CHINA SEA AND GULF OF THAILAND

*Project Management Framework*



# INCEPTION WORKSHOP FOR THE SEAFDEC/UNEP/GEF FISHERIES REFUGIA PROJECT

## Decision-making flowchart and organizational chart





## INCEPTION WORKSHOP FOR THE SEAFDEC/UNEP/GEF FISHERIES *REFUGIA* PROJECT

### Project Steering Committee

**Operated to oversee and act as a principal decision making body for the project**

- ❖ The PSC's role will be to provide managerial and governance advice to the project, and to guide the PCU of SEAFDEC in the implementation and monitoring of the overall regional project;
- ❖ The PSC will meet annually and its membership shall consist solely of representatives of all participating countries
- ❖ For each country, one member will be the Chairperson of the policy-level, National Fisheries *Refugia* Committee; the other shall be the Chairperson of the National Scientific and Technical Committee
- ❖ The UNEP Task Manager will participate in PSC meetings
- ❖ The Project Director will serve as the Secretary of the committee



## INCEPTION WORKSHOP FOR THE SEAFDEC/UNEP/GEF FISHERIES *REFUGIA* PROJECT

### Regional Scientific and Technical Committee

**Operated as a bridge between the scientific community  
and decision-makers involved in the project**

- ❖ Responsible for ensuring that scientific and technical aspects of the fisheries refugia project meet International standards;
- ❖ It will review the substantive activities of the project and provide sound scientific and technical advice to the Project Steering Committee regarding matters requiring decision
- ❖ It will also provide direction and strategic guidance to national bodies as required required
- ❖ The RSTC will meet biannually and its membership shall consist of the Chairpersons of the National Scientific and Technical Committees (NSTC); a representative of SEAFDEC; and selected regional experts. Project Director is Secretary.



## INCEPTION WORKSHOP FOR THE SEAFDEC/UNEP/GEF FISHERIES *REFUGIA* PROJECT

### National Fisheries Refugia Committees

**Operated to strengthen cross-sectorial coordination in the establishment and management of fisheries refugia**

- ❖ Will assume overarching responsibility for the execution of national level activities of the project;
- ❖ Will receive, review, and approve reports from the management boards of refugia sites;
- ❖ Consider advice from the National Scientific and Technical Committees in decision-making;
- ❖ Will meet on a quarterly basis; and
- ❖ Provisional membership lists were developed during the project preparation phase.



## INCEPTION WORKSHOP FOR THE SEAFDEC/UNEP/GEF FISHERIES *REFUGIA* PROJECT

### National Scientific and Technical Committees

**Will harness national scientific and technical expertise and knowledge to inform reforms for fisheries refugia**

- ❖ Will assume overarching responsibility for the review and co-ordination of national scientific and technical activities of the project;
- ❖ Will provide the NFRC with recommendations on proposed national and site-based activities, work plans, and budgets;
- ❖ Will compile and evaluate national level sources of information and data for sharing at the regional level through the Regional Scientific and Technical Committee;
- ❖ Will meet on a biannual basis; and
- ❖ Provisional membership lists were developed during the project preparation phase.



## INCEPTION WORKSHOP FOR THE SEAFDEC/UNEP/GEF FISHERIES *REFUGIA* PROJECT

### Site-based management boards

#### **Catalyzing community-led action at priority fisheries refugia sites**

- ❖ Plan and guide the timely execution of site-based activities; review and take action where necessary to ensure appropriate levels of government, NGO, community, and private sector engagement in site-level activities;
- ❖ Ensure compatibility between the recommendations for action at the fisheries refugia site with other local level activities for fisheries and coastal habitat management;
- ❖ Facilitate the approval and implementation, by the competent local authority, of management plans and courses of action developed during the course of project execution; and
- ❖ Provisional membership lists were developed during the project preparation phase.



## INCEPTION WORKSHOP FOR THE SEAFDEC/UNEP/GEF FISHERIES *REFUGIA* PROJECT

### National Lead Agencies

**Assume overall responsibility for the execution of the national-level activities in their respective countries**

- ❖ Fisheries Administration of Cambodia, the Directorate General of Capture Fisheries (Indonesia), the Department of Fisheries (Malaysia), the National Fisheries Research and Development Institute (Philippines), the Department of Fisheries (Thailand), and the Fisheries Administration of Viet Nam;
- ❖ Will nominate National Focal Points and National Technical Focal Points; and
- ❖ The National Focal Point shall act as the main point of contact with SEAFDEC and UNEP, and shall participate in annual regional Project Steering Committee meetings.





## INCEPTION WORKSHOP FOR THE SEAFDEC/UNEP/GEF FISHERIES *REFUGIA* PROJECT

### Project Co-ordinating Unit (PCU)

**Established within SEAFDEC and led by a Project Director with support from SEAFDEC'S policy, technical and financial units**

- ❖ Assumes overall leadership, management and technical oversight of the fisheries refugia project;
- ❖ Is responsible for regional project governance, monitoring and reporting;
- ❖ Provides policy/technical advice and advocacy;
- ❖ Supports regional and national coordination, including the establishment of partnerships and networking; and
- ❖ Manages/coordinates external communications.