

**Species composition from  
push net**

---

**Density of fish larvae and  
eggs from bongo net**



# Juvenile fishes collection from push net

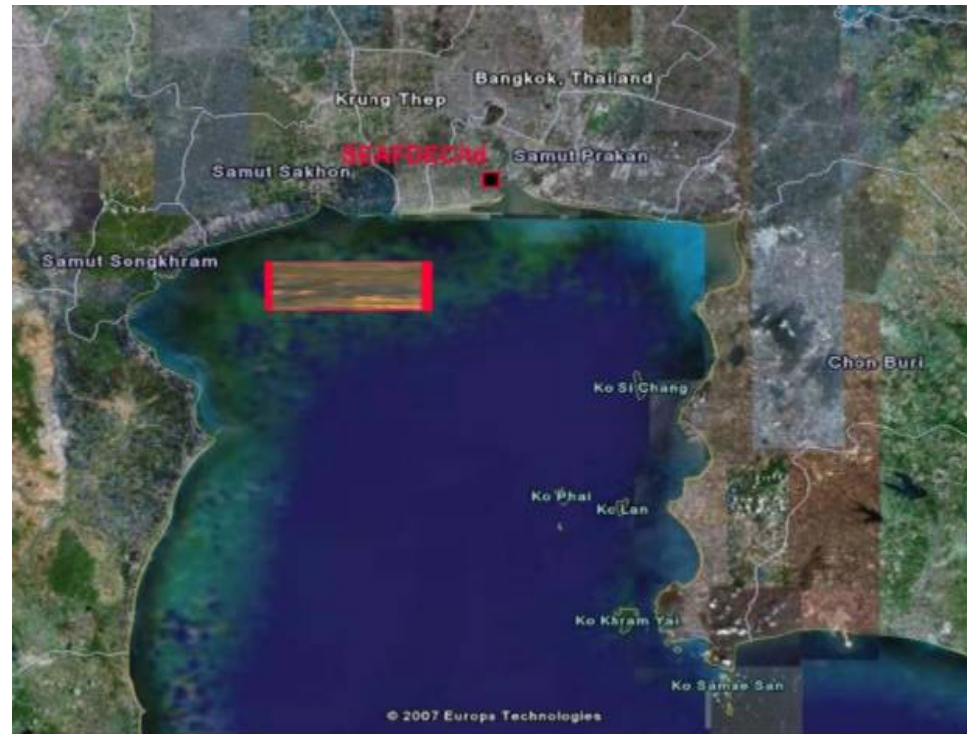


Located area : Samut Sakhon

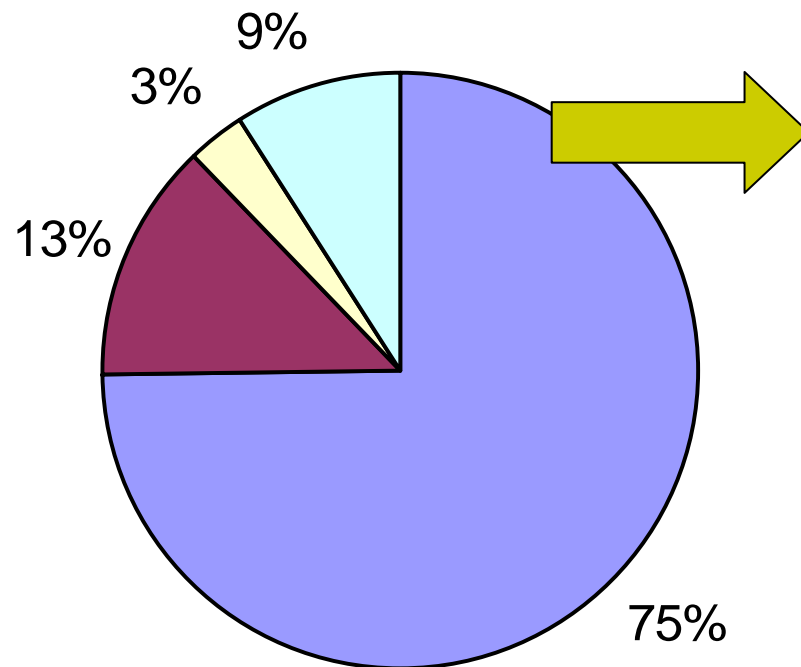
Depth of capture : 6 m

Towing time : 53 minute

Total catch : 59.2 kg



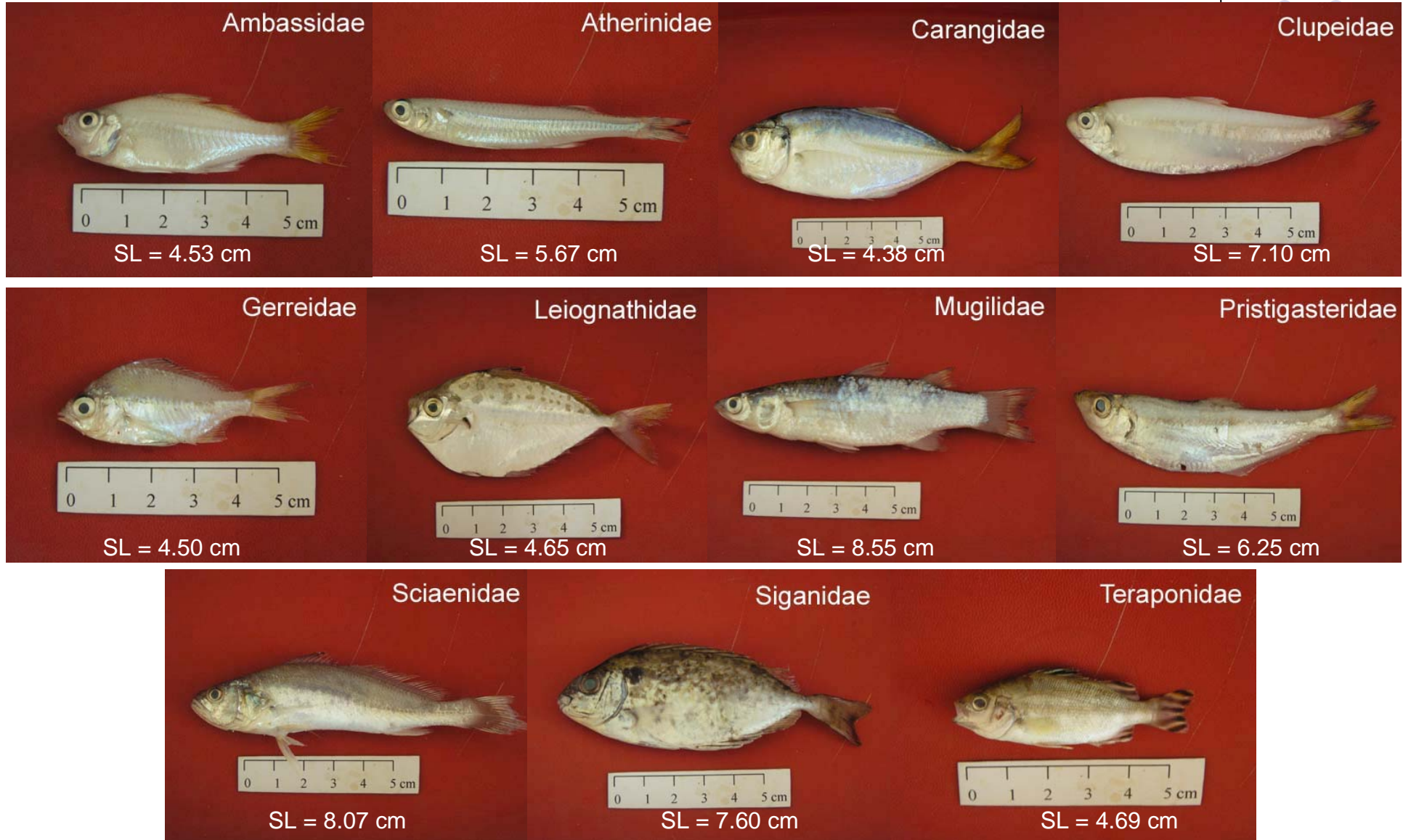
# Total catch from push net



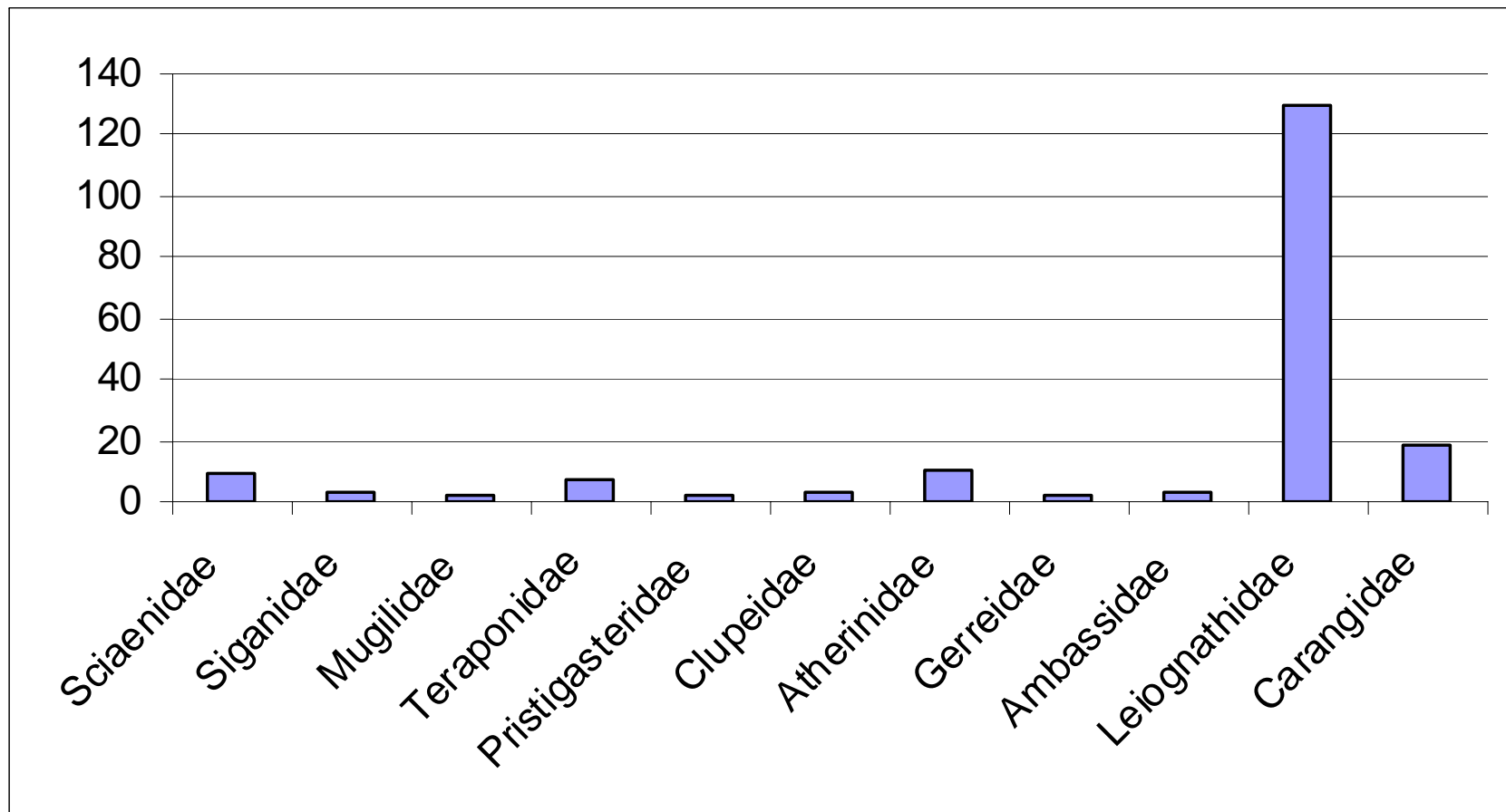
Random sampling  
1 kg.

- Fish
- Shrimp
- Mantis shrimp
- Squid

# Results



# Individual / kg.



# Fish larvae collection from bongo net



Located area : Koh Lan

Towing depth : 20 m.

Towing time : 10 minute (obliquely 45°)

Bongo net

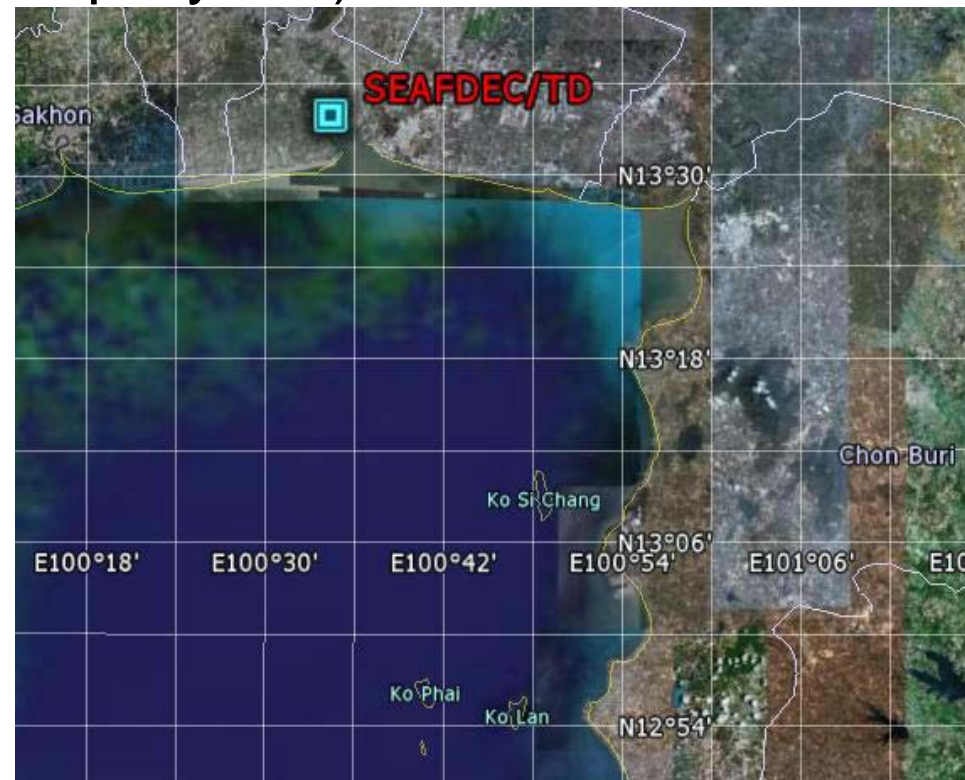
Diameter : 60 cm.

Mesh size : 330  $\mu$ m.

Rev.of flowmeter : 4262

Samples preservation

: 10% formalin







**Bothidae**



**Apogonidae**



**Scorpaenidae**



**Carangidae**



**Engraulidae**



**Sillaginidae**



**Platycephalidae**



**Nemipteridae**



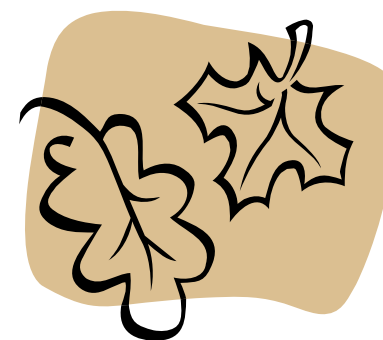
**Callionymidae**



**Gobiidae**



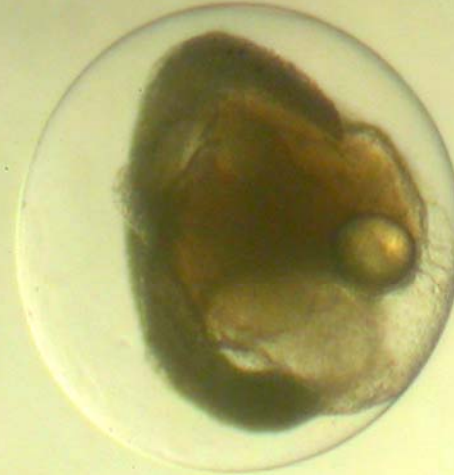
**Cynoglossidae**



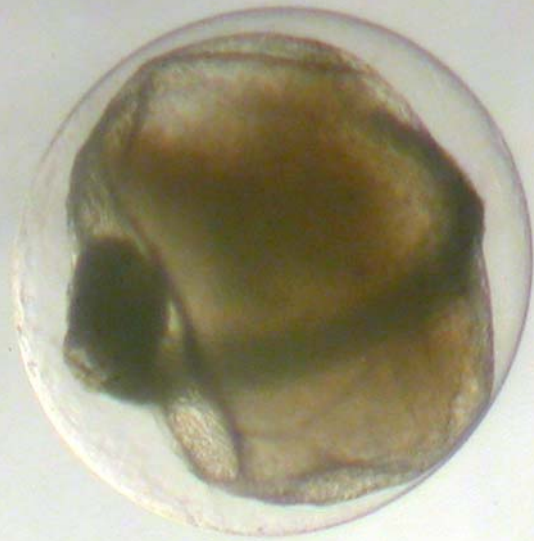
Elliptical shape , Non oil globule



Spherical shape, single oil globule



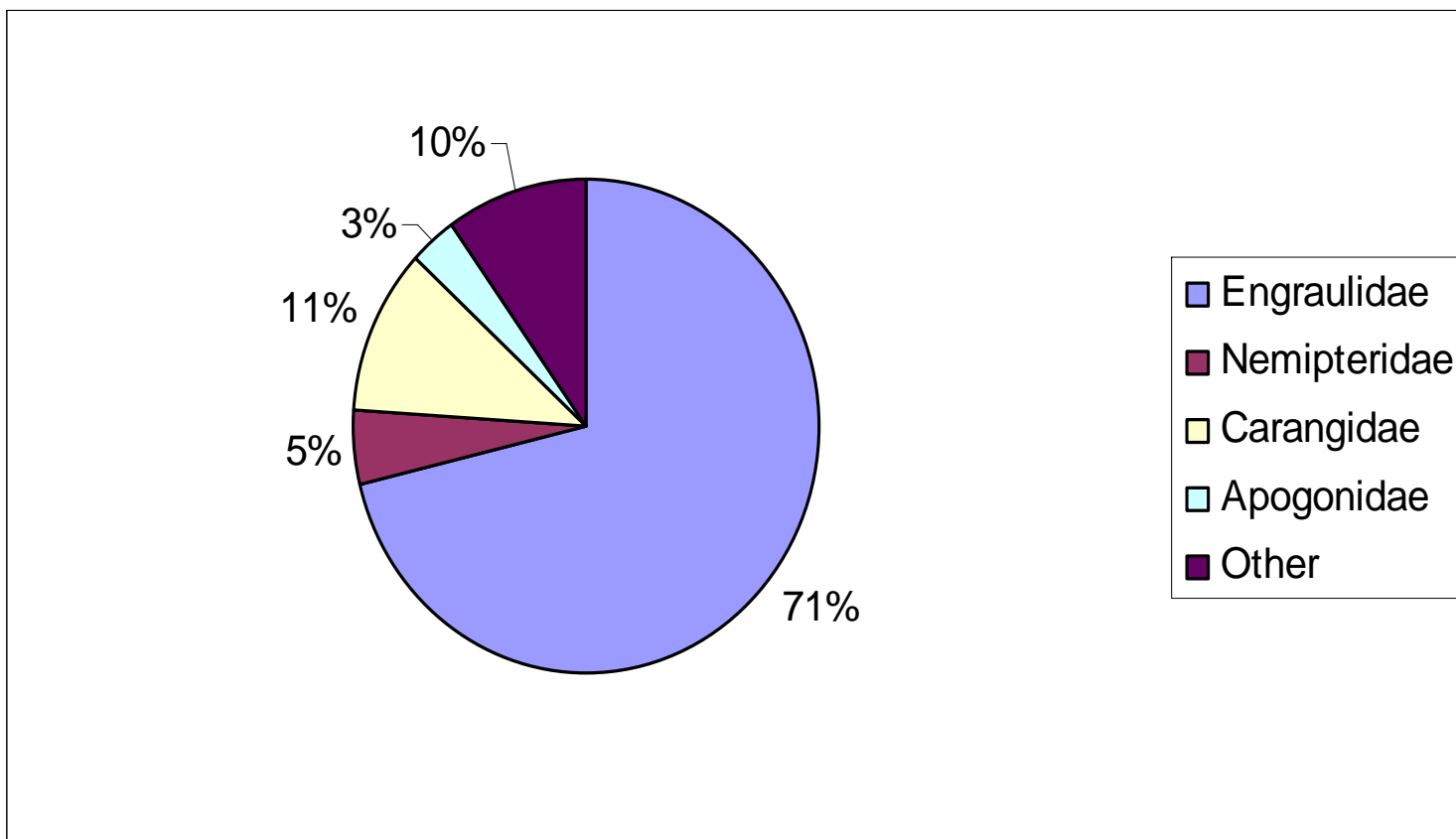
Spherical shape , Non oil globule



Spherical shape, multi oil globules

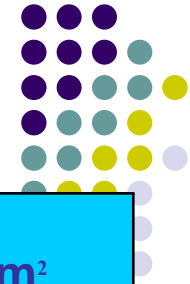






**Remark** Other : Bothidae, Scorpainidae ,Cynoglossidae, Sillaginidae, Platycephalidae, Callionymidae, Gobiidae, Unknown

# Density of fish larvae and eggs



Family	Ob.	Ind./1000m <sup>3</sup>	Ind./10m <sup>2</sup>
Engraulidae	167	1197.30	239.46
Scorpaenidae	3	21.51	4.30
Platycephalidae	3	21.51	4.30
Apogonidae	8	57.36	11.47
Sillaginidae	1	7.17	1.43
Carangidae	25	179.24	35.85
Nemipteridae	12	86.03	17.21
Callionymidae	5	35.85	7.17
Gobiidae	4	28.68	5.74
Bothidae	2	14.34	2.87
Cynoglossidae	3	21.51	4.30
Unknow	2	14.34	2.87
Eggs	418	2996.12	599.37

# Future plan



- To study fish larvae from marine fishery resources survey projects in the South East Asia waters
  - To study Fish larvae collected between Feb-April 2007 on board M.V. SEAFDED2 from Myanmar waters and the EEZ of Thai waters about 70 stations.



Thank you





No.	Famaly	ob./kg	ind/53min	ind/hour
1	Sciaenidae	9	432	489
2	Siganidae	3	144	163
3	Mugilidae	2	96	109
4	Teraponidae	7	336	380
5	Pristigasteridae	2	96	109
6	Clupeidae	3	144	163
7	Atherinidae	10	480	543
8	Gerreidae	2	96	109
9	Ambassidae	3	144	163
10	Leiognathidae	130	6240	7064
11	Carangidae	19	912	1032

## Density of fish eggs and larvae from bongo net (individual/10 m<sup>2</sup>)



Eggs	ob.	es.
	418	599.37
Family	ob.	es.
Engraulidae	167	239.46
Scorpaenidae	3	4.30
Platycephalidae	3	4.30
Apogonidae	8	11.47
Sillaginidae	1	1.43
Carangidae	25	35.85
Nemipteridae	12	17.21
Callionymidae	5	7.17
Gobiidae	4	5.74
Bothidae	2	2.87
Cynoglossidae	3	4.30
Unknow	2	2.87
<b>Total</b>	<b>235</b>	<b>336.96</b>

# Abundant in sea water volume



Eggs	Unit/1000m <sup>3</sup>
Family	Unit/1000m <sup>3</sup>
Engraulidae	1197.30
Scorpaenidae	21.51
Platycephalidae	21.51
Apogonidae	57.36
Sillaginidae	7.17
Carangidae	179.24
Nemipteridae	86.03
Callionymidae	35.85
Gobiidae	28.68
Bothidae	14.34
Cynoglossidae	21.51
Unknow	14.34