



Equipment and operation of Vessel monitoring systems (VMS)

Virtual SEAFDEC Regional PSM Inspector Training

26-29 October 2021

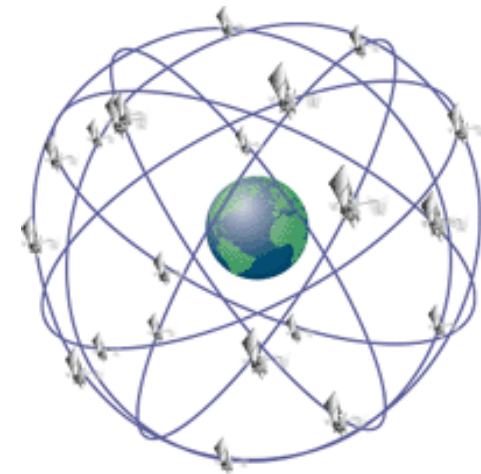


NOAA
FISHERIES

Office of Law
Enforcement

Global Positioning System - explained

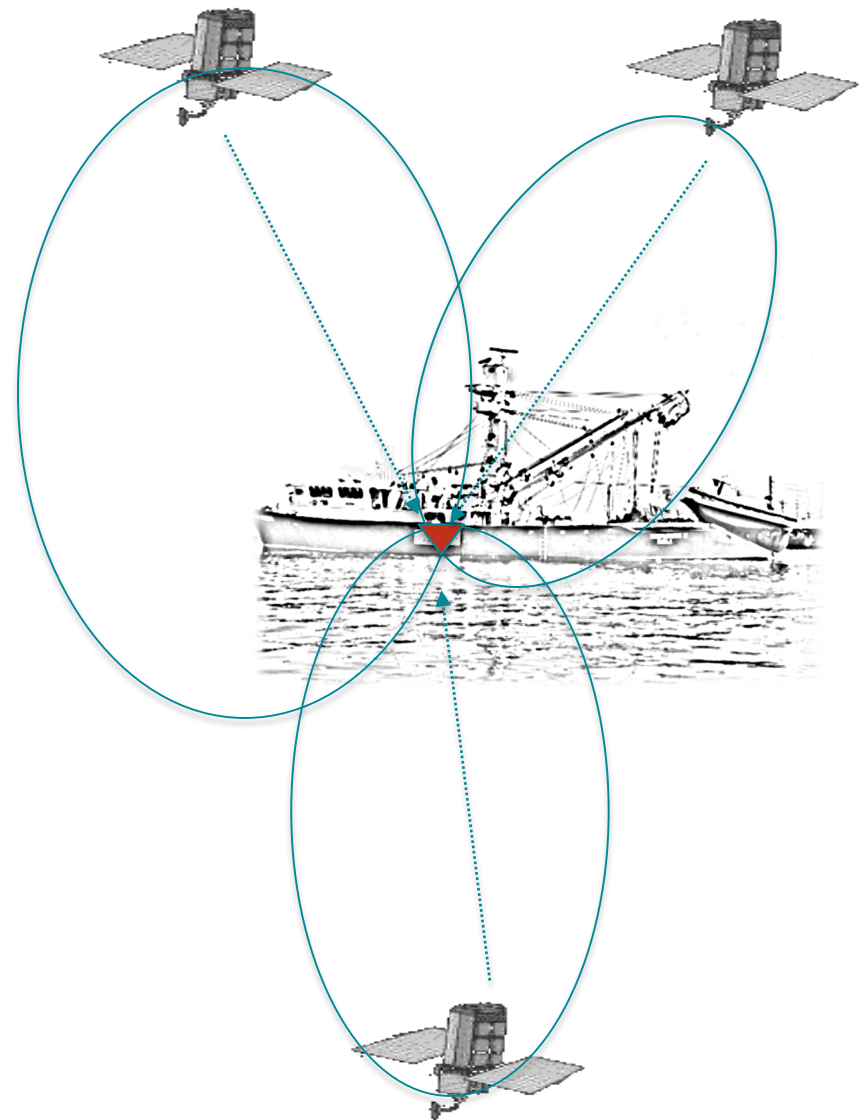
- Network of 27 interconnected satellites that orbit the earth and can determine the exact location of anyone accessing their signals at a given time.
- Receiver is used to interpret signals from these GPS satellites, and can pinpoint the location of a vessel to within a few feet
- GPS information is embedded within:
 - Vessel Monitoring System (VMS)
 - Automatic Identification System (AIS)



GPS explained

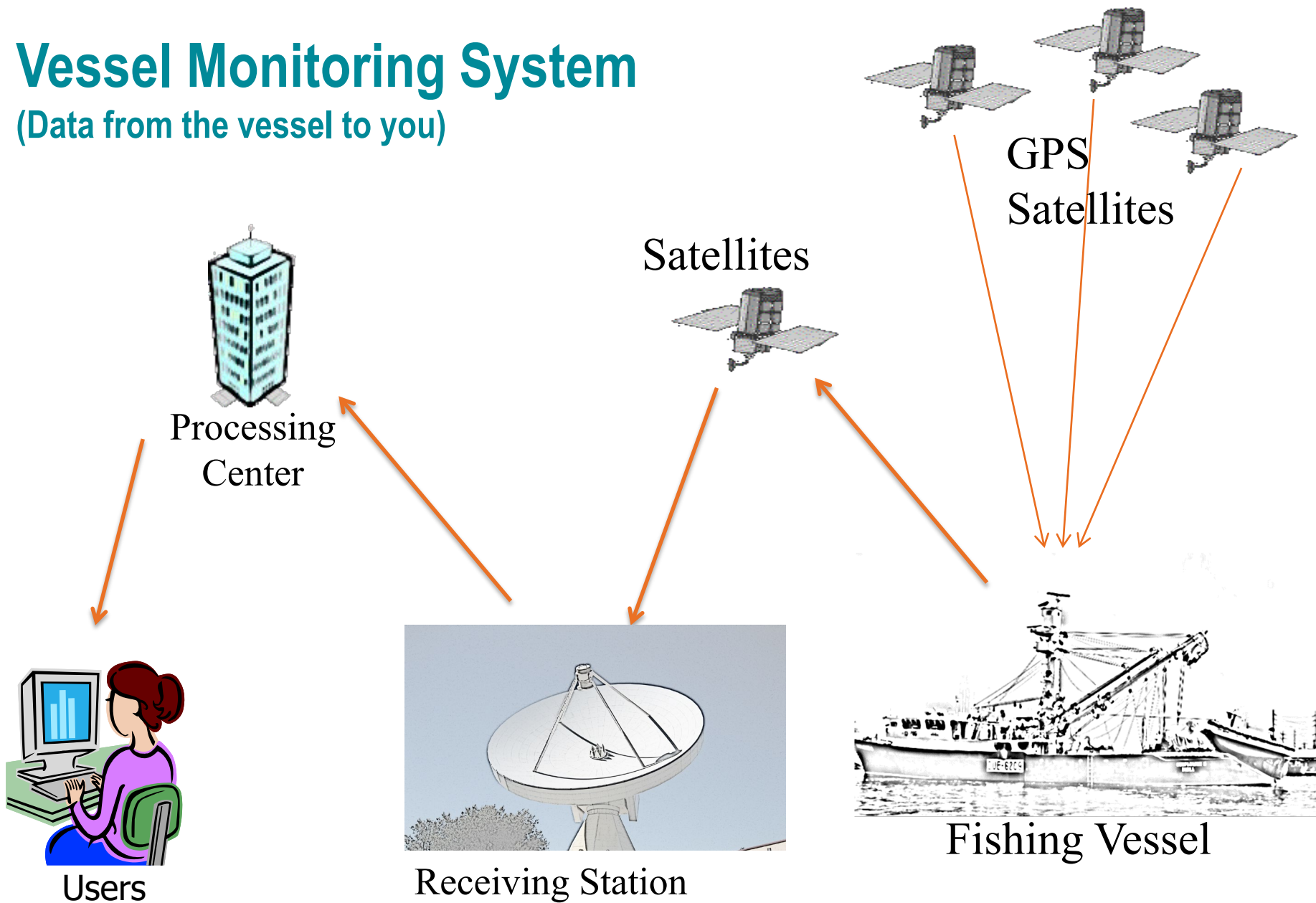
Trilateration

- Measures distance to 3 or more satellites
- Intersection of spheres is the receivers location



Vessel Monitoring System

(Data from the vessel to you)



Data Collected

Vessel ID	Xceiver status	Lat	Long	Date	Time	Declaration	Vessel name	DOC/ Permit #	Speed	Direction
-----------	----------------	-----	------	------	------	-------------	-------------	---------------	-------	-----------

- VMS data includes
 - (GPS) position reports (Latitude, Longitude)
 - Date and time
 - Speed, course
 - Name and Registry information
 - License / Permit data
 - Gear Declarations

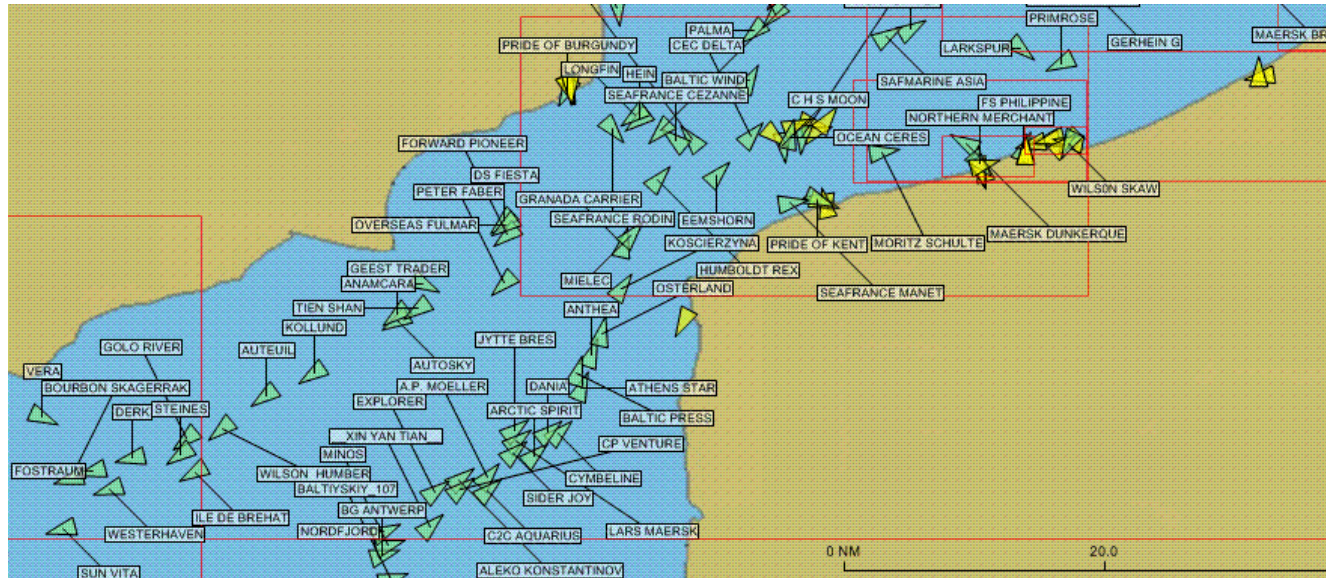


Software System for viewing

The screenshot displays the vTrack software interface. The browser address bar shows the URL <https://vms.nmfs.noaa.gov/vtrack/domain/main-search>. The interface includes a navigation menu with options like 'vTrack', 'Search and updates', 'VMS tasks', 'Alerts', 'Reports', and 'Administration'. A search bar is present with 'free-text search' and 'in areas' dropdowns. A 'When' section allows filtering by date range (From date: 20160607, To date: 20160610). A 'How' section shows 'Output' options: GIS output, text output, raw output, Map, detailed, flow output, first/last, and Google Earth. A 'More GIS' panel is open, showing various map layers and labels. The main map area shows a yellow-shaded region of Alaska with several vessel tracks. A legend in the bottom right corner identifies 'catch' (red) and 'effort' (green). A text box at the bottom left of the map area contains the following text:

Text/email alerts can be set up to notify users of location and speed, and of particular behaviors of a vessel of interest.

Automatic Identification System (AIS)

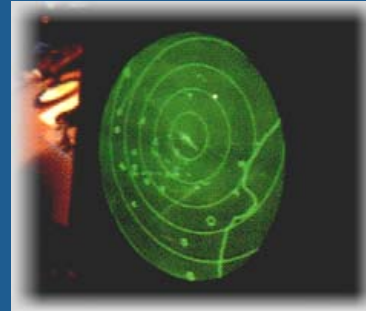


- Endorsed by the International Maritime Organization
- Maritime safety
- Maritime Domain Awareness - provides governments with greater situational awareness of commercial vessels and their cargo
- Operates in the VHF maritime band
- Communicates ship to ship as well as ship to shore
- Transmits information on a real-time, wholly automated basis relating to:
 - ship identification,
 - geographic location,
 - vessel type, and
 - cargo information

VMS Program Goals

What does it do for Field Enforcement?

MONITORING
- Detect/Deter



INTEL / PATROL
COORDINATION



INVESTIGATIONS
- Document



Benefits of VMS

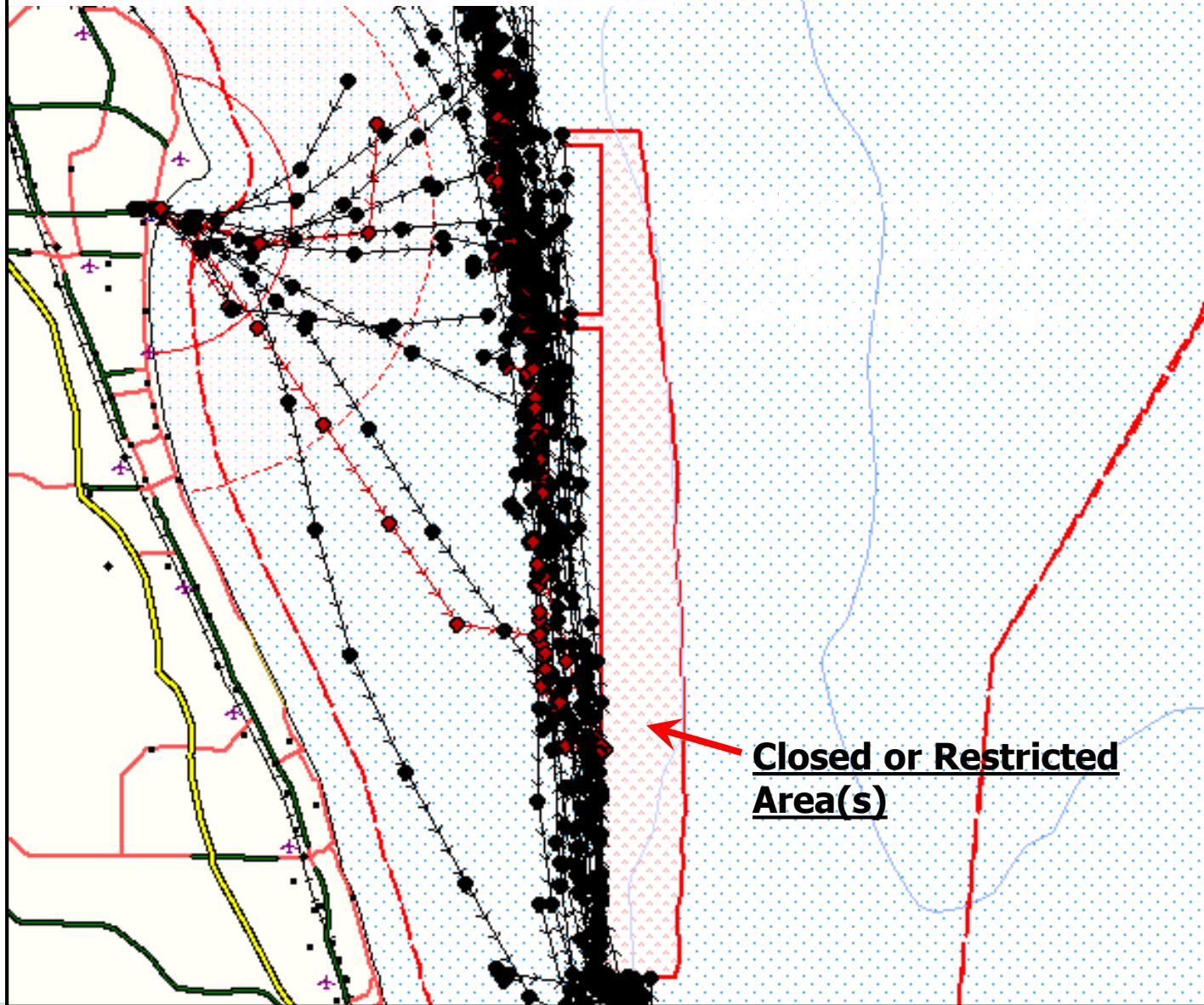
- Improved Surveillance
 - Provides Fleet Location Monitoring for monitored fleets
 - Efficient Directed Response to Suspicious Activity and Violations
 - Efficient coordination for intelligence and patrol resources
- Increased Safety
 - Accurate Position Data Transferred in Near Real-Time
 - Two-Way Communications Capable (newer units have e-mail capability)
- Enhanced Security
 - Rapid Vessel Identification for Search and Rescue Operations



Monitoring

- Detect/deter violations
 - F/Vs in foreign EEZ
 - Managing sensitive areas such as marine protected areas
- Verifying/validating data from other sources
- Monitoring activity and arrivals in port to plan for inspections and investigations
- Supporting Homeland and National Security initiatives

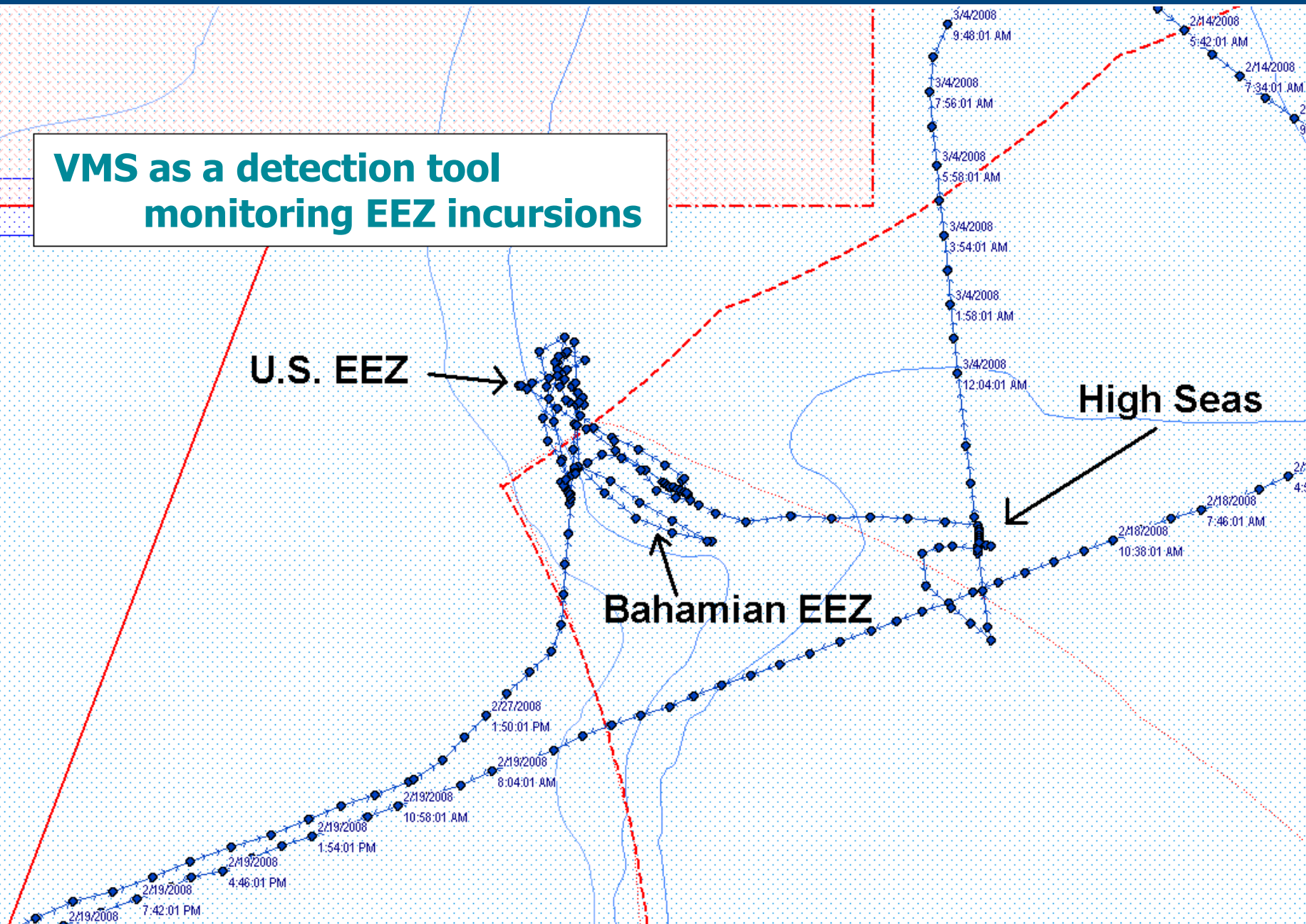
VMS as a deterrent.



Closed or Restricted Area(s)



VMS as a detection tool monitoring EEZ incursions



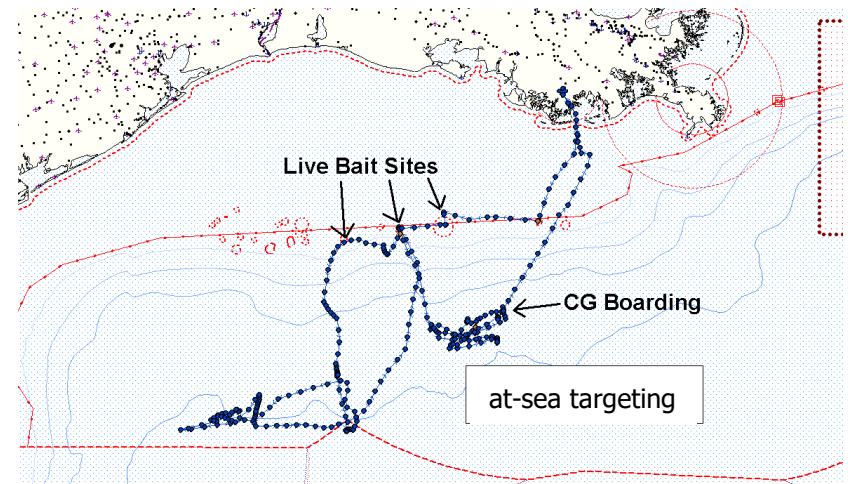
Intelligence Information

- VMS provides enforcement with valuable intel:
 - Start of fishing season/increased effort
 - Fishing fleet movement
 - Current position of vessels of interest
 - Landing ports
 - Possible increased interaction with ESA species (sea turtles, right/humpback whales)



Patrol Planning / Coordination

- VMS assists in patrol planning/coordination by identifying F/V concentrations
- Patrols compliment VMS by ensuring compliance with VMS requirements (non-reporting, verifying identity)



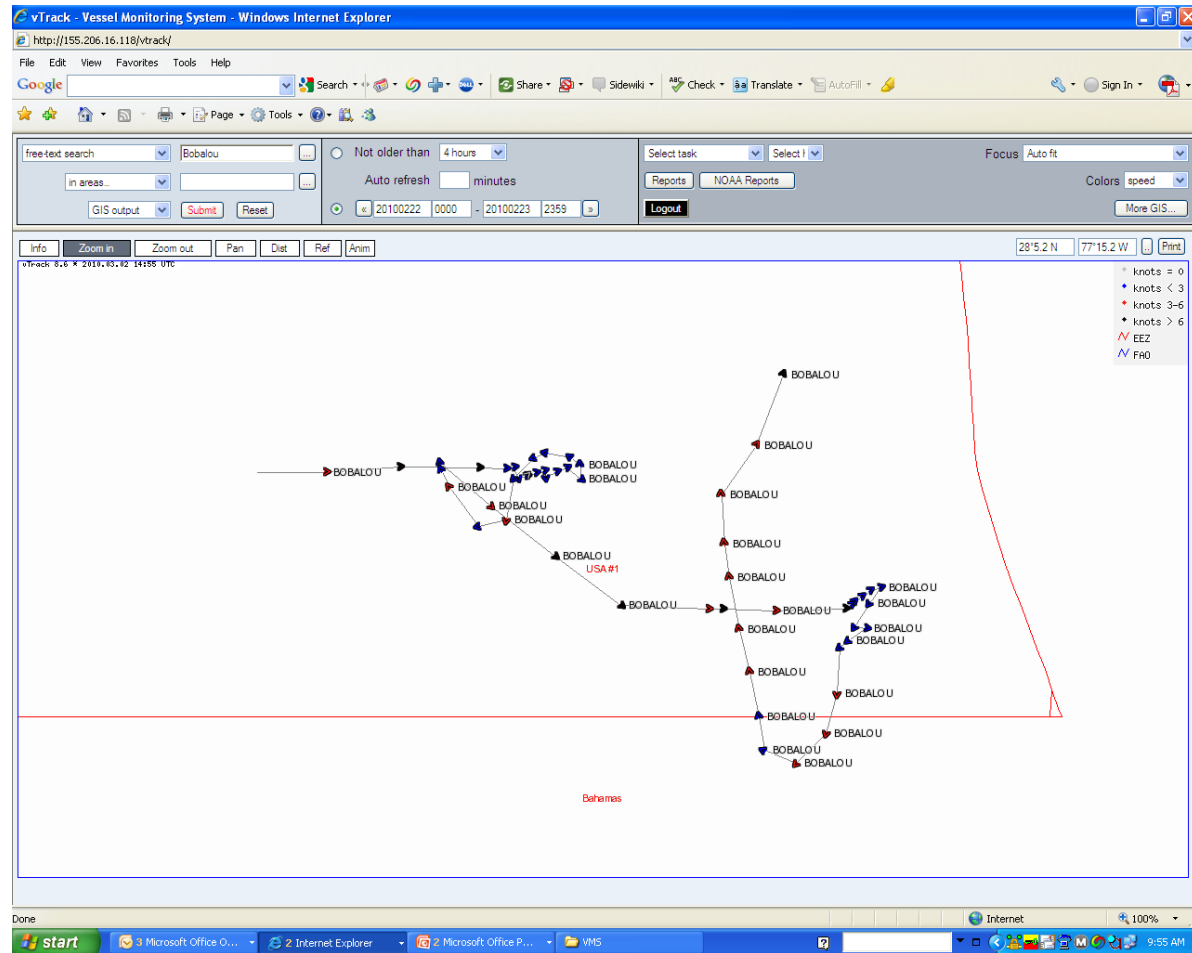
Investigations

- VMS assists agents with investigations
 - Provides position evidence and historical data
 - Vessels can be tracked for follow-up investigation, dockside boarding
 - Data can be compared to vessel GPS and logbook information through Track Analysis



VMS: Track Analysis

- Software displays vessel track data based on position reports, i.e. “connects the dots”
- Speed info important in certain fisheries
 - Trawling
 - Longlining



Track Analysis

- Currently, no case precedence of using VMS to establish a “Fishing Signature”
- VMS data coupled with knowledge of fishing practices and GPS forensics can assist agents/officers with identifying fishing activity
 - Useful for vessel captain/owner interviews
 - In closed area cases where there is an enhanced penalty for fishing in the area
 - Provides GCEL a clear picture of activity

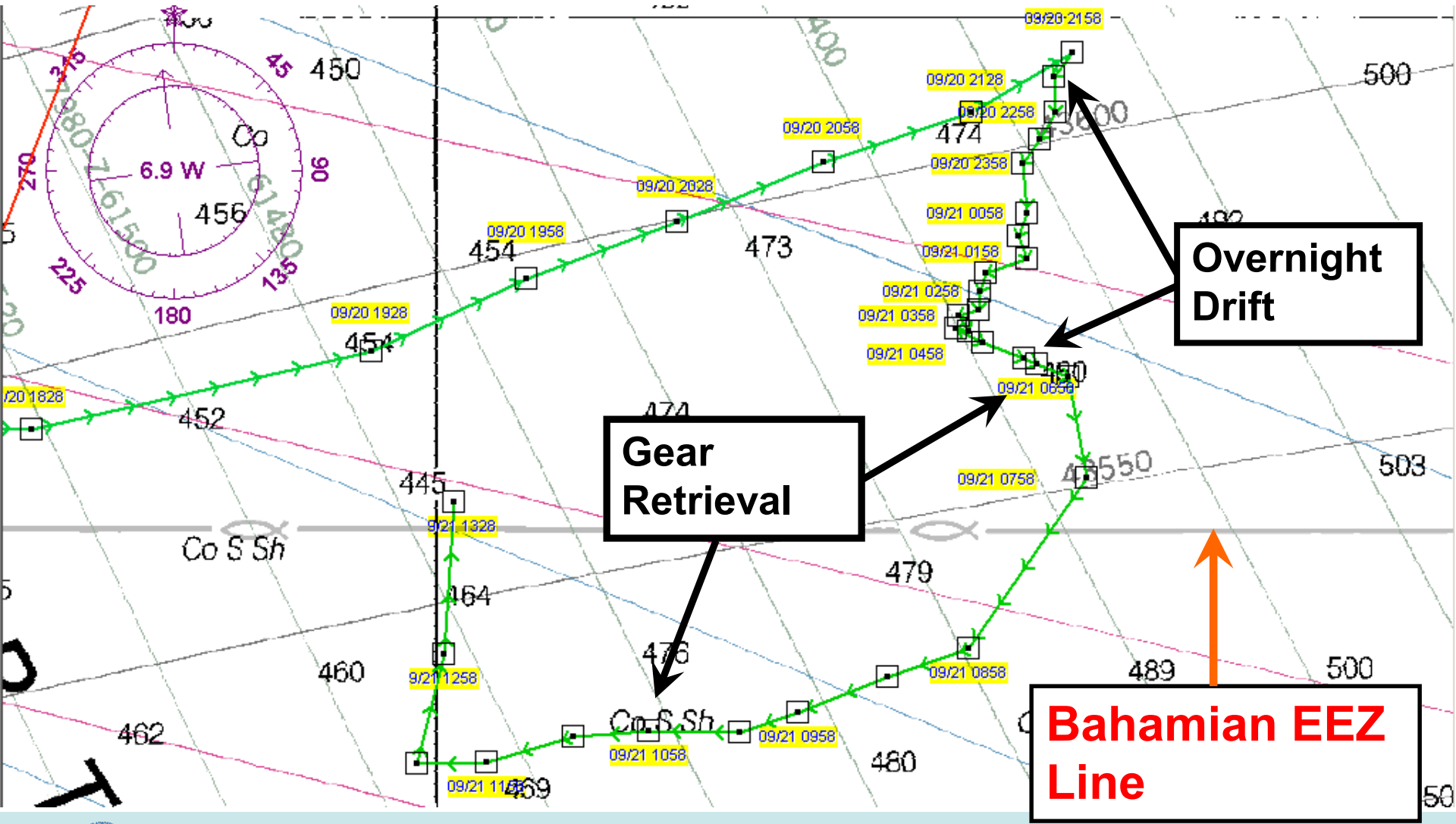


Case Examples (HMS Pelagic)

- HMS Pelagic longliner targeting swordfish
- VMS showed activity in Bahamian EEZ
- VMS tracks compared to Captain's logbook
- Once confronted with VMS info, Captain gave an admission



Set 1 Overnight Drift and Gear Retrieval from VMS Data

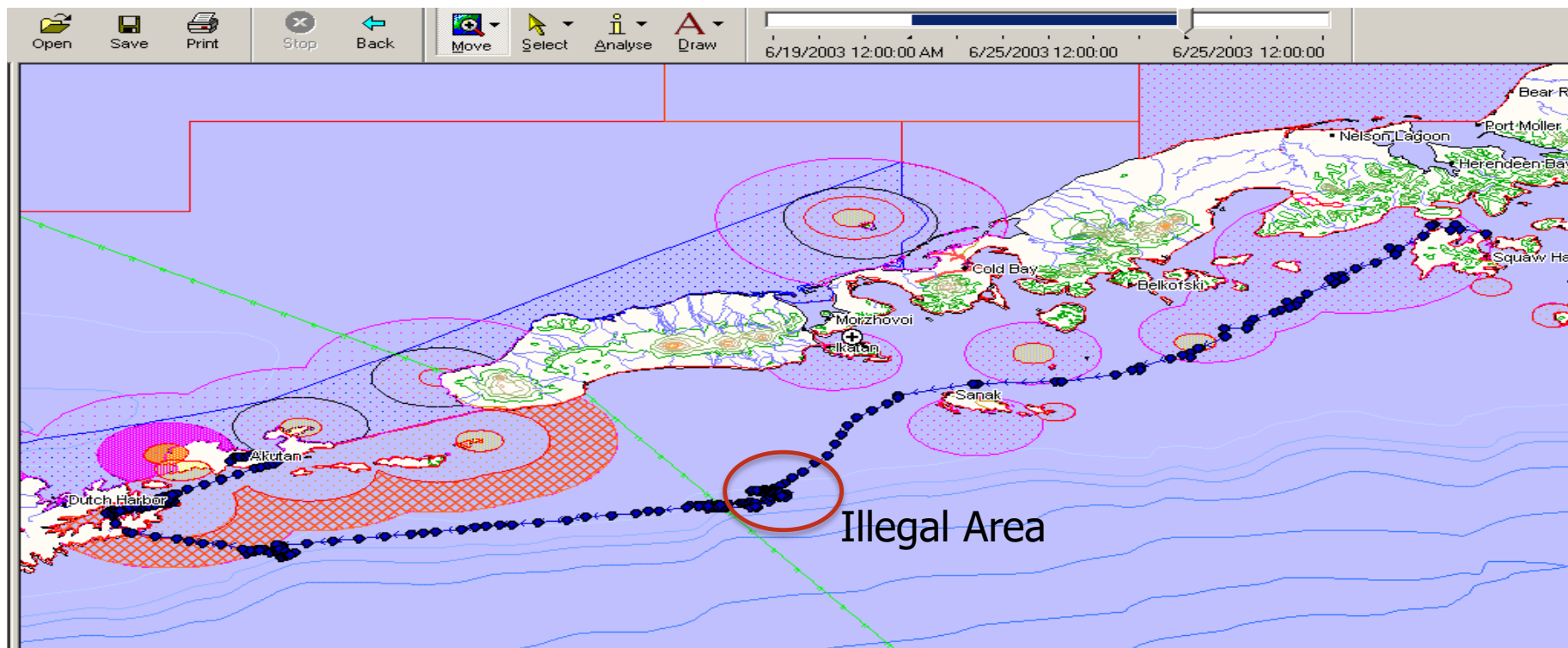


Gear Retrieval

Overnight Drift

Bahamian EEZ Line

IFQ Pacific Halibut Example



- Long Line vessel targeting Pacific Halibut and Sablefish
- Did not hold IFQ quota for halibut (right of green line) but could legally harvest Sablefish
- No saved positions on plotter and failed to produce any fishing logs / records
- Denied fishing for Pacific halibut

Recognizing Illegal Fishing

Analysis of course, speed and positions demonstrated that the vessel traveled over the same two areas:

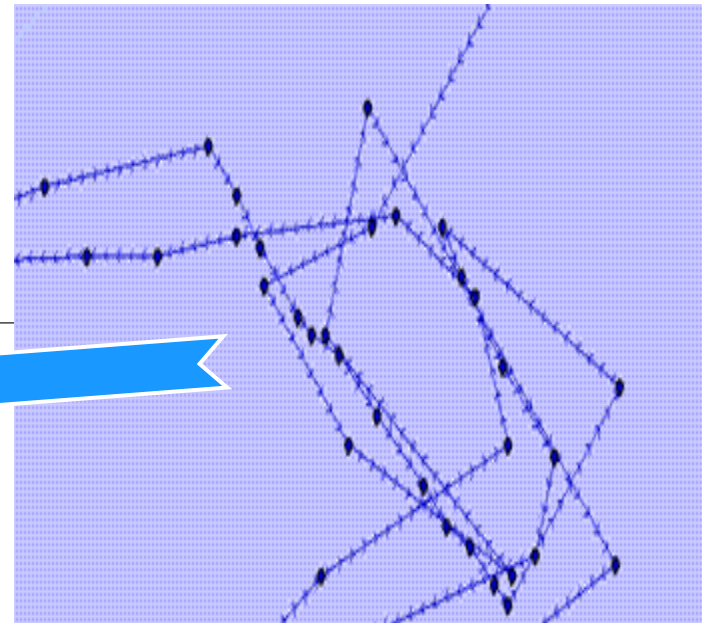
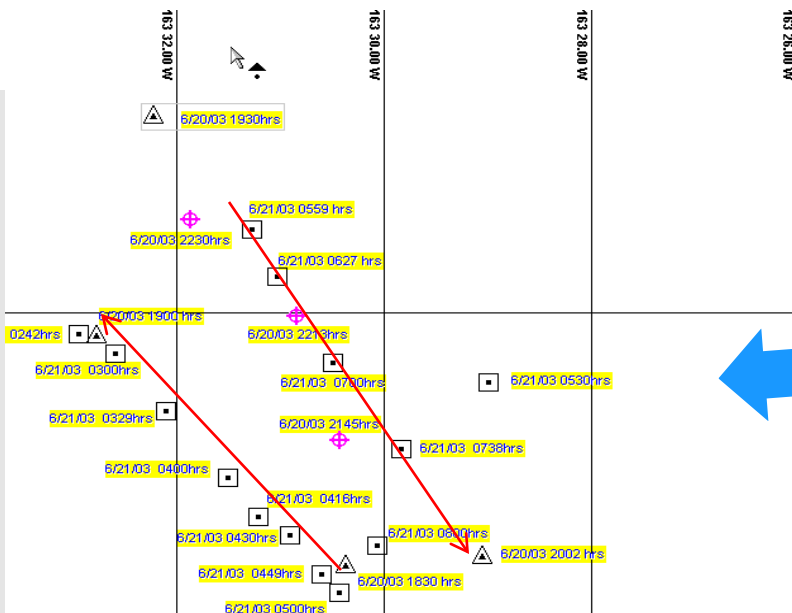
- At a speed consistent with setting long line gear,
- At a speed consistent with retrieving long line gear after departing for a period of time consistent with fishing of long line gear.

Bottom characteristics were consistent with the preferred depth habitat for Pacific halibut and not sablefish.

Gear Deployment
6/20 1830-1900 hrs
S- 4 kts / C-316* T
D - 2NM

Soak time: 7'42"

Gear Retrieval
6/21 0242 – 0500 hrs
S - 0.9kts / C - 139*T



Once confronted with evidence, the Captain did not admit guilt but negotiated a settlement in the case.

VMS under RFMO's and International Agreements



Check The Vessel's Licenses, Authorizations, Vessel Register, and Registration of FV Listings

- WCPFC Record of Fishing Vessels (RFV): <http://www.wcpfc.int/record-fishing-vessel-database>
 - This is not a “license list”; it is a list of vessels “authorized” by their flag State to fish for HMS (tuna) on the high seas in the WCPFC Convention Area
 - Vessels on this list should be reporting in VMS to WCPFC, but are generally only “visible” to WCPFC if/when on the high seas in the Convention Area.
 - Vessels on this list should also (in most cases) be reporting in VMS to their flag States (who likely have fuller visibility than WCPFC)
 - **Vessels on this list should be reporting to coastal state(s) when within their EEZ (and/or on the high seas within 100 NM outside of the EEZ)**



Check/Determine the Vessel's Targeted Species

- If HMS (tuna), it should likely be on one of the lists above (and if it is not on one or more of those lists above, need to check with the vessel's flag State authorities)
- If not HMS (tuna), there may not be a VMS requirement for the vessel (need to check with your own regional or national fisheries authorities if in doubt)

Check Log Books to Determine Where the Vessel Fished on this Trip

- If on the high seas in the WCPFC Area, it should be on at least the WCPFC RFV, & should be visible to Coastal State(s) in within their EEZ
- If in an FFA member EEZ, it should be on at least the FFA RFV, & should be visible to FFA VMS staff

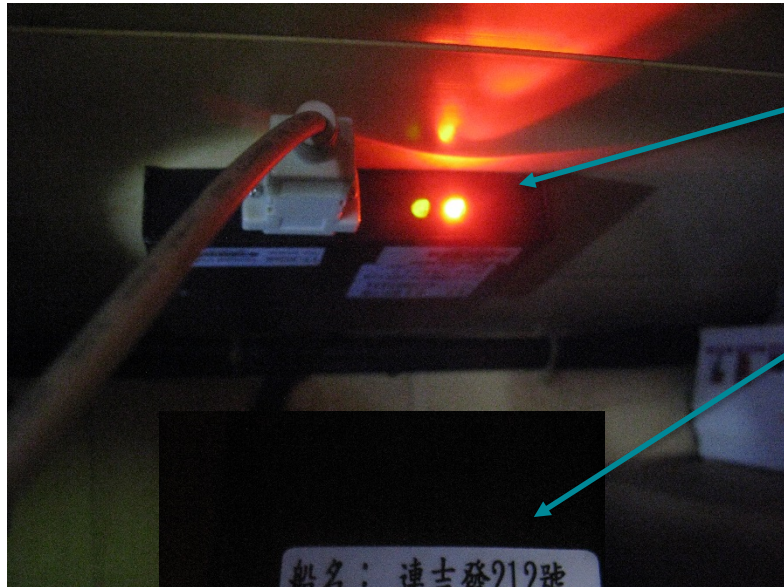


Check the VMS Junction Box (Aka “Black Box”) in the Wheel House to Confirm “Power On”

- A very wide variety of VMS units are installed on non-US vessels; some are not easily located/recognized/identified (see examples, in following slides)
- Some captains/vessel masters cannot identify their own VMS units (or reliably determine if they are fully operational)
- Sometimes easiest to start at the VMS antenna and follow the cable back to the wheel house “black box” (that is not always black, and is sometimes inside cabinets)
- Normally the vessel’s flag State authorities and/or FFA (if on the FFA VMS list) will be most reliable in confirming a vessel’s VMS-reporting status/history



Unit Inspection



Is the:
Unit on and
functioning?

Serial Unit # the
same as listed
on RFMO Vessel
Record?



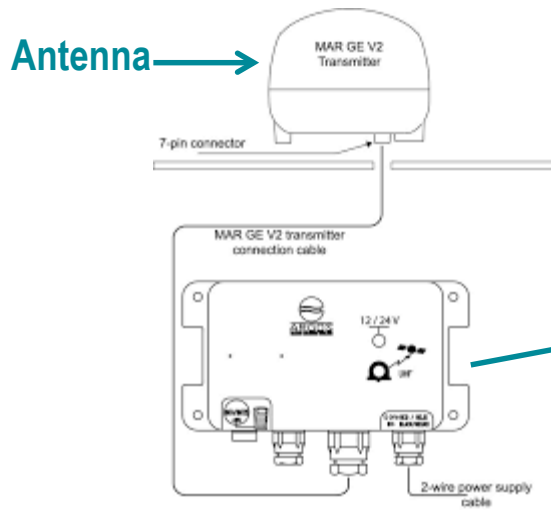
Wires connected
and undamaged
between unit
and antenna?



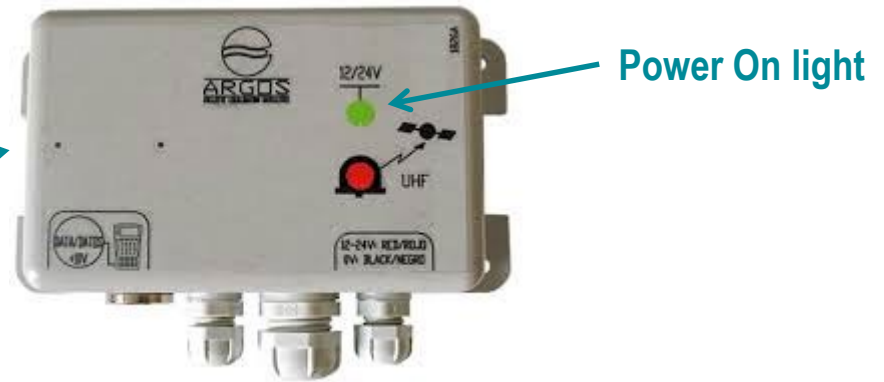
Is the Antenna
blocked from
transmitting?



CLS ARGOS MAR-GE & GE V2



Normal display (in wheelhouse)



CLS LEO

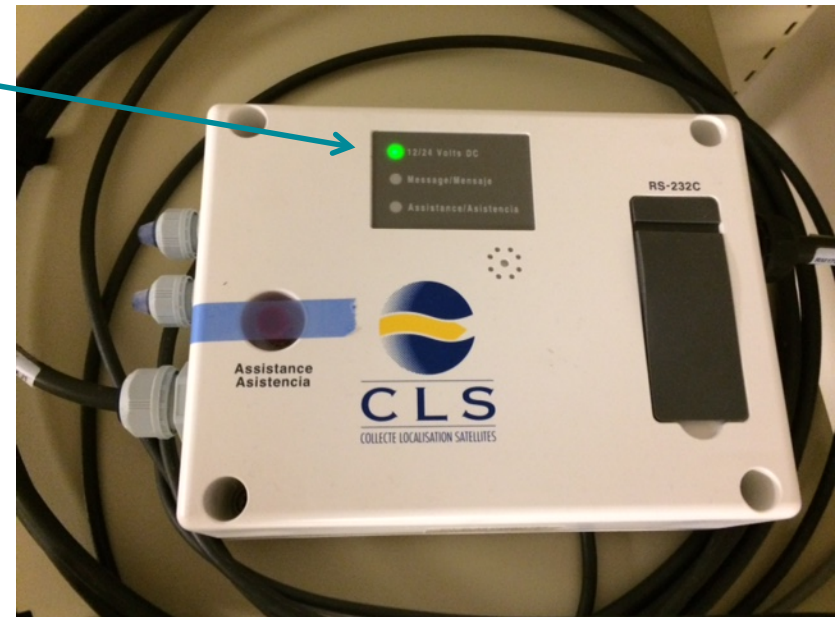
Normal display (in wheelhouse)
(note: box is only about 2" wide x 4" high)



Power On light

CLS Thorium TST100

Normal display (in wheelhouse)



Furuno Felcom-series

JRC 75C

Antenna



Distress buttons



Power On & status lights



Normal display (in wheelhouse)
Power On & status lights



EME
Weight :
Apporox,4kg

Unit : mm



IME
Weight :
Apporox,約4kg

normal display "black box" in wheelhouse



JRC 95VM

Power On & status lights



Internal Mounted Equipment

Antenna

External Mounted Equipment



Thrane & Thrane 3020C & 3022C & 3026D

Antenna

Variation of 3020C



3020C "black box" (in wheelhouse)
Power On & status lights



3022C "black box" (in wheelhouse)



3026D (mini) antenna & "black box"

Trimble TNL 8001 “black box”/terminal



TNL 8001 antenna, terminal, keyboard



TNL 8001 integrated terminal & junction box

Faria “Watchdog” wheel house components*

Optional Accessories

Faria VTERM™

- 7-inch WVGATFT color display with an integrated touch-screen.
- Use the display for text messaging, forms reporting and e-mail.

2” User Interface

- Displays system status, when unit detects a GPS fix and an open communication channel.
- Can send emergency notifications



Note: this small round indicator's readout, in some cases may be the only indication in the wheel house that the unit is operating

* Note: Faria's “black box” has no lights/indicators & is often installed internally



Multiple Sources of Electronic Information



Other Electronic Devices

- Electronic devices can provide multiple sources of evidence and can be the most accurate data available in an investigation.
- The ability to identify and secure electronic evidence is essential not only in the present investigation, but also for identifying potential historical violations.
- In addition to Vessel Monitoring Systems (VMS), electronic evidence may be found on devices such as, chart plotters, global positioning systems (GPS), and laptops.



Other Electronic Devices

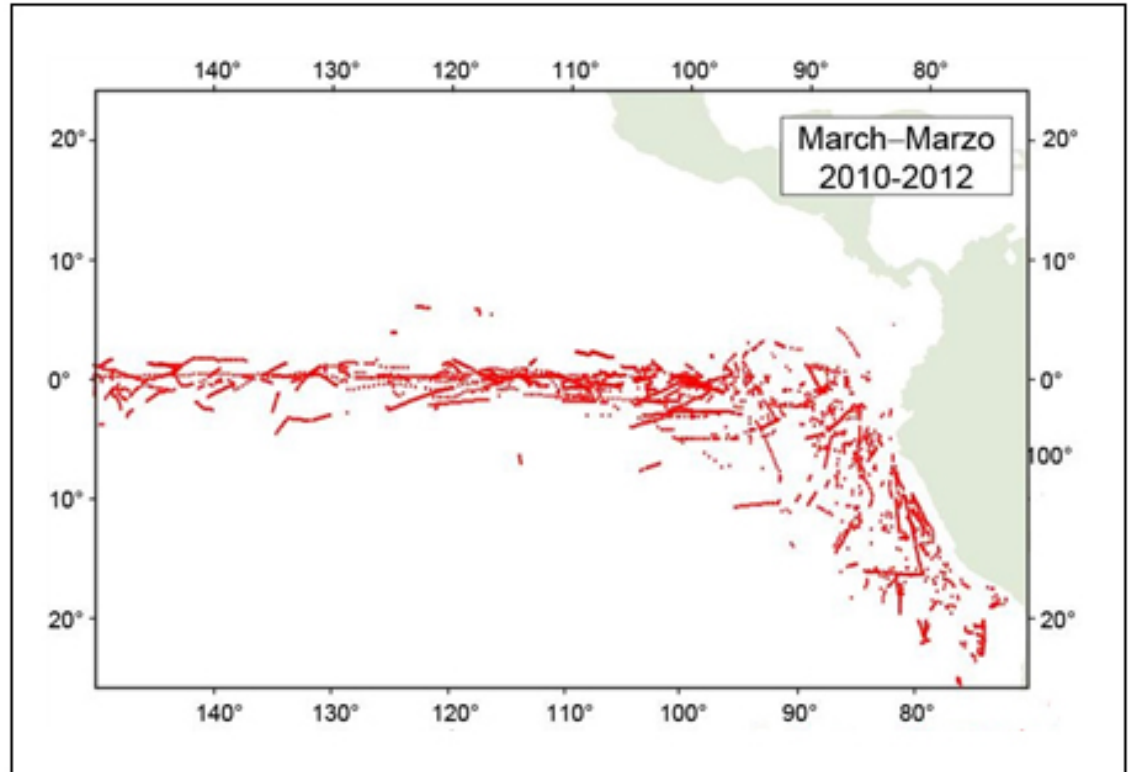
- Closed Systems (e.g., VMS)
- Open Systems
 - GPS Plotter
 - Radar
 - Sounder
 - Computers
 - Communications equipment
 - Electronic logbooks



Other Electronic Equipment



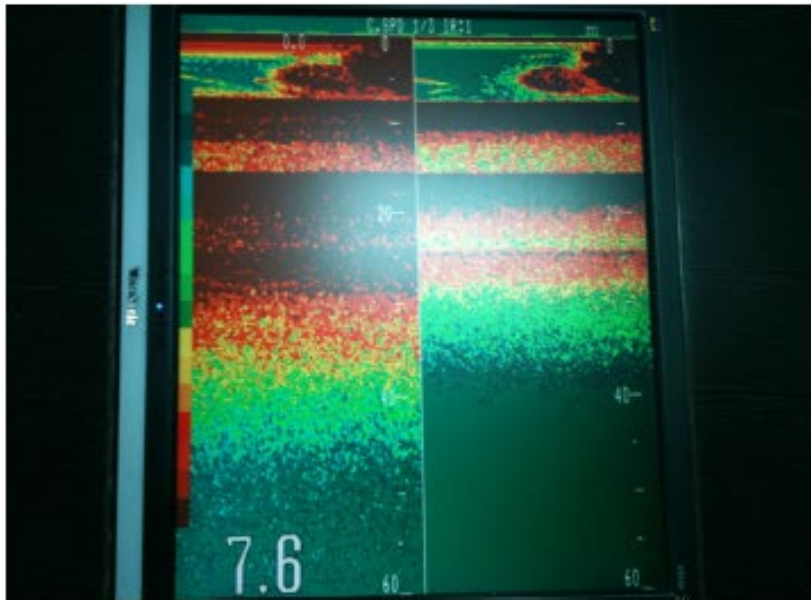
GPS / VMS Antenna



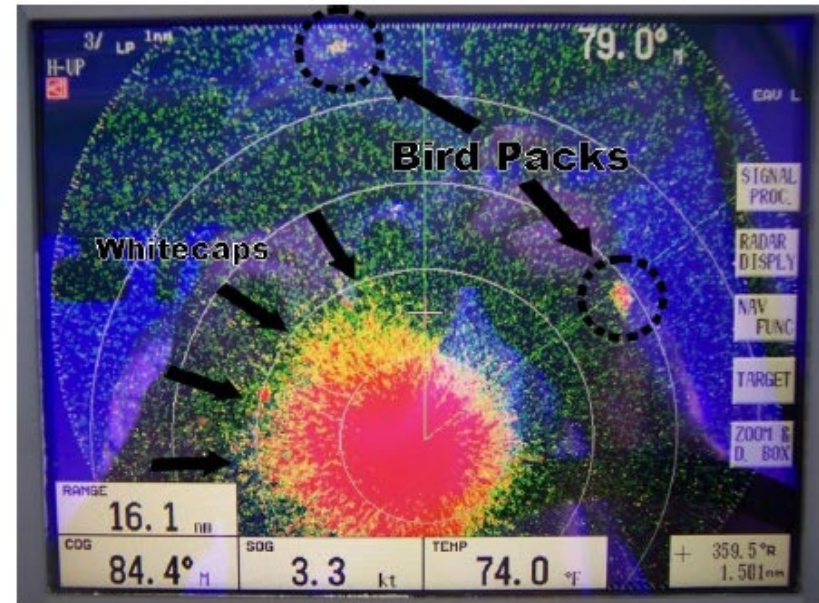
Fisheries Aggregating Device (FAD)
Tracking

Other Electronic Equipment

Sounders



Bird Radar



Closed Circuit Television (CCTV) and Electronic Monitoring System (EMS)

- Required video monitoring devices
- Non-mandatory units
- May have recording device on vessel or in remote location



Screen shot from video footage recording fishing activities onboard fishing vessel Yi Man 3. Photo Credit: Satlink.



GPS Unit

- Global Positioning System
- Maintain independent storage of marks, tracks, routes
- Connected to PC/Laptops used in vessel navigation
- They overwrite the oldest data – **TURN THEM OFF TO PRESERVE DATA**
- Use discretion regarding continued safe operation of the vessel (utilize escort)
- Analysis may be able to reveal if any changes were made to the device and when those changes were made



Personal Computer/Laptop

- Uses software to display data received from GPS unit and overlay onto a chart
- Creates a 2nd set of available data
- Identifies what part of the GPS data is most valuable to the captain (ie, it's been saved)
- May identify if there has been obstruction or deletion of data (time/date stamps)
- Provides other data (VMS emails - SkyMate)

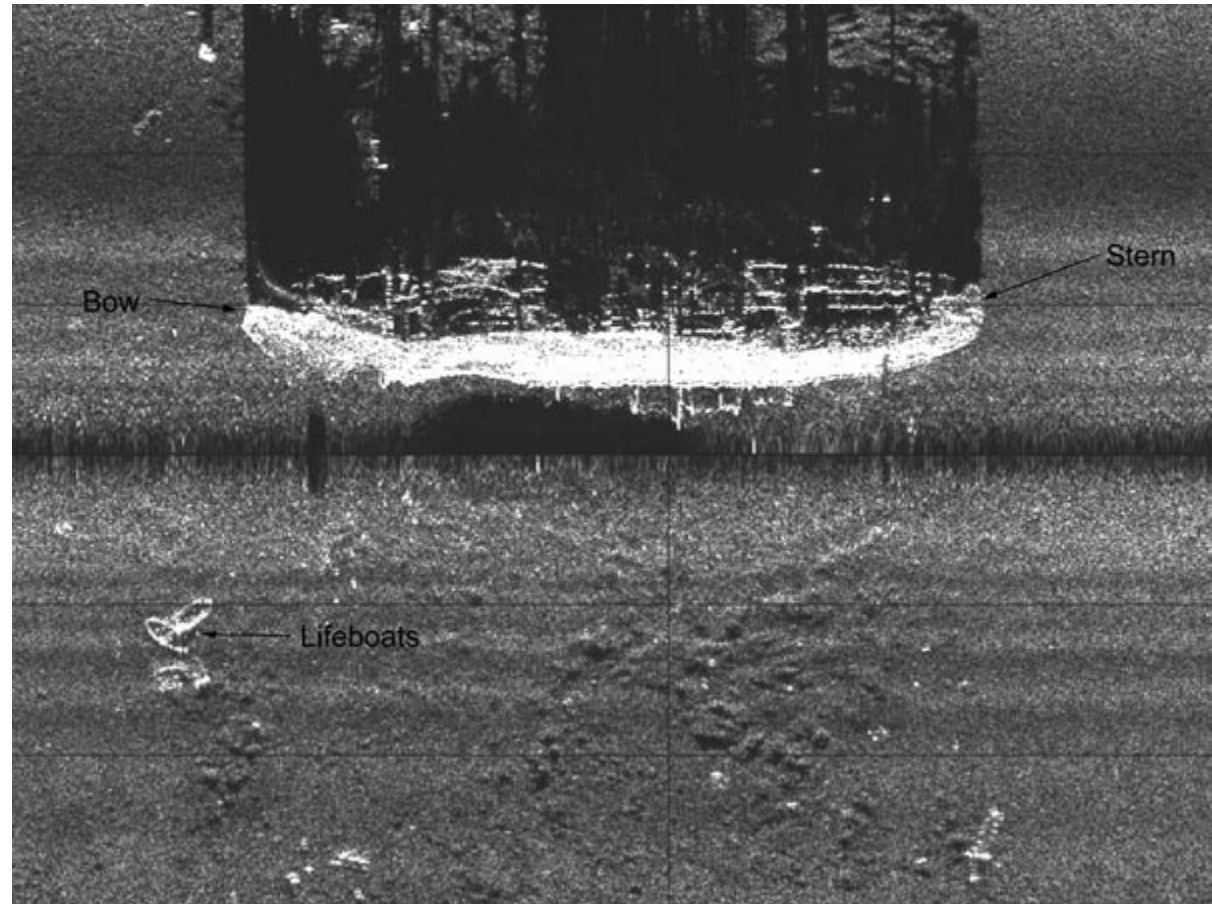


Sounder/Sonar

SOund NAvigation and Ranging

Used to find and identify objects in the water

Can be used for fish detections and determining seabed conditions



A side-scan sonar image of the passenger freighter Robert E. Lee, collected by the HUGIN 3000 AUV in 2001.

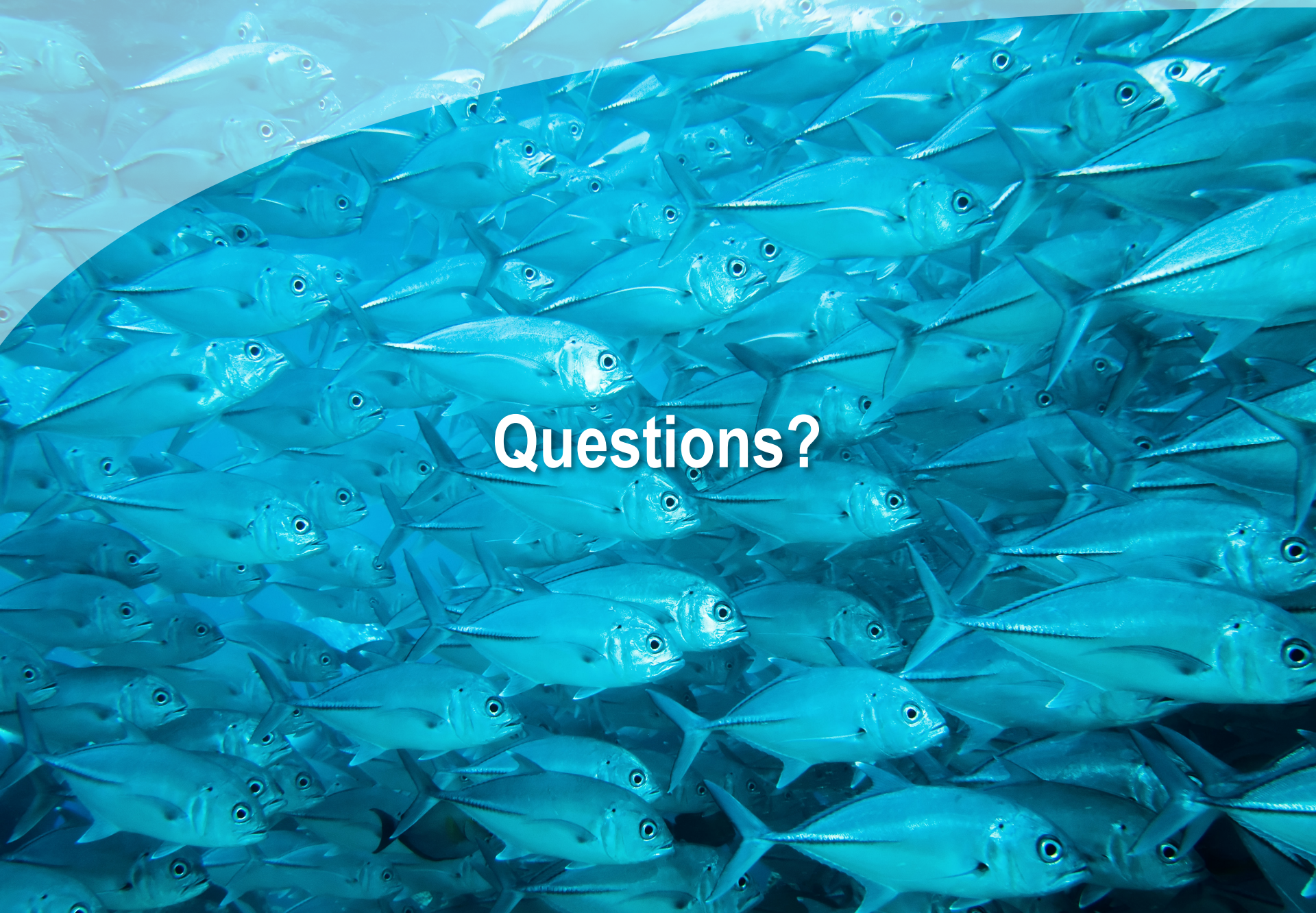
Why electronic information is important

- It can be the most accurate data available in the investigation
- It can provide more detailed vessel signature data (due to reporting frequency)
- GPS data consistently verifies the accuracy of VMS data – helps legally substantiate the data
- It can help uncover historical violations
- It a source to identify when people lie/obstruct
- Know there is always a potential it may exonerate a subject



Summary

- Value of VMS / AIS is based on:
 - understanding and familiarity of the system available to you,
 - RFMO and national restrictions on access
- Proven effective tool for MCS practices and compliance by the monitored fleets
- Think outside the box for investigative purposes



Questions?

