



LESSONS LEARNED AND IMPLEMENTATION OF CATCH DOCUMENTATION SCHEME AND TRACEABILITY OF FISH AND FISHERY PRODUCTS

EUGENE M. CASAS

Senior Fishing Regulations Officer

EDISON A. PESARIO

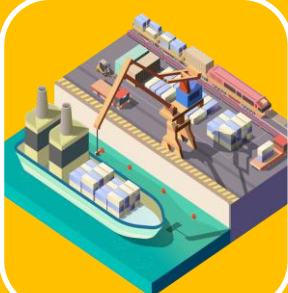
Fishing Regulations Officer I

Bureau of Fisheries and Aquatic Resources 12

CATCH DOCUMENTATION SCHEME



Sea



Port



Transport



Facility



Processing



Export

CATCH DOCUMENTATION SCHEME PAPER BASE

- SUBMISSION OF NOTICE OF ARRIVAL/
ADVANCED REQUEST FOR ENTRY TO PORT



CATCH DOCUMENTATION SCHEME

PAPER BASE

➤ VALIDATION AT PORT

- The Fisheries inspector conduct an onsite validation for the legality of the catch by checking the following documents

Fresh	Frozen (PH and foreign Flag)
<p>Vessel/Boat Registration (MARINA) Fishing Licenses (CFVGL, DWFP, SFP) Logsheet Captain/Mates transfer Certificate Stowage Plan COC</p>	<p>Vessel/Boat Registration (Country) Fishing Licenses (CFVGL, DWFP, SFP, Coastal State FP) Logsheet Transshipment Cert FODF Stowage Plan Voyage Memo Ship Particulars (Foreign only) Captain Mates Receipt/Statement</p>



CATCH DOCUMENTATION SCHEME PAPER BASE

➤ MONITORING OF UNLOADING AND WEIGHING

- The Fisheries inspector monitors the unloading and weighing of fishery products and record all the data in the Fish Unloading Monitoring Report , and deposit slip for the frozen products



CATCH DOCUMENTATION SCHEME PAPER BASE

➤ MONITORING OF PROCESSING AND/OR CS DEPOSIT AND WITHDRAWAL

- The Fisheries inspector monitors the receiving of the raw materials in the processing establishment and cold storage deposit and withdrawal activity.



CATCH DOCUMENTATION SCHEME PAPER BASE

➤ CHECKING, VERIFICATION, AND RELEASING OF CATCH ORIGIN LANDING DECLARATION (COLD)

- The Fisheries inspector checks and verify all the data on the COLD by checking all the records of the Second Border Inspectors prior to issuance of COLD.

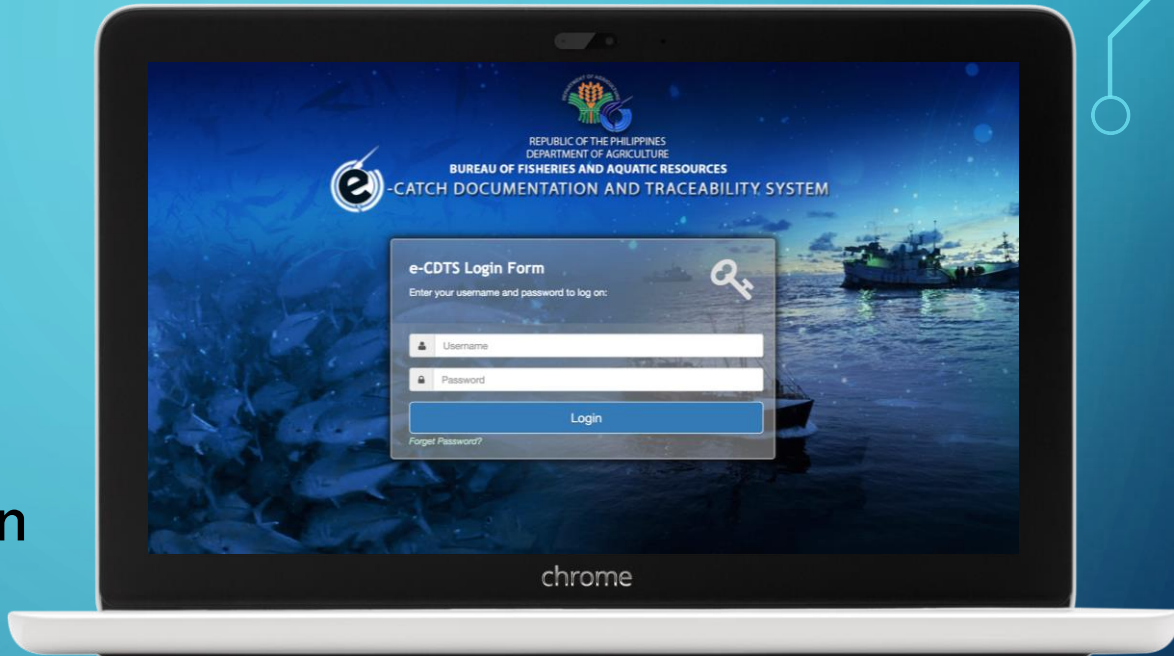
The image shows a sample of a Catch Origin Landing Declaration (COLD) form. The form is titled "CATCH ORIGIN LANDING DECLARATION" and includes fields for "Name of Landing Area", "Date of Landing", "Species", "Catch Quantity", "Date of Landing", "Number of Fishermen", "Number of Boats", "Number of Fishermen", and "Number of Boats". It also features a table with columns for "Species of Catch", "Quantity of Catch", "Date of Landing", "Number of Fishermen", "Number of Boats", and "Number of Fishermen". The form is filled out with handwritten information.

WHAT IS E-CDTS

- streamline and digitize the Philippine Catch Documentation process
- simplify the Traceability of Fisheries Product
- help in preventing and deterring Illegal Unreported Unregulated Fishing
- Management of fisheries and aquatic resources

FEATURES

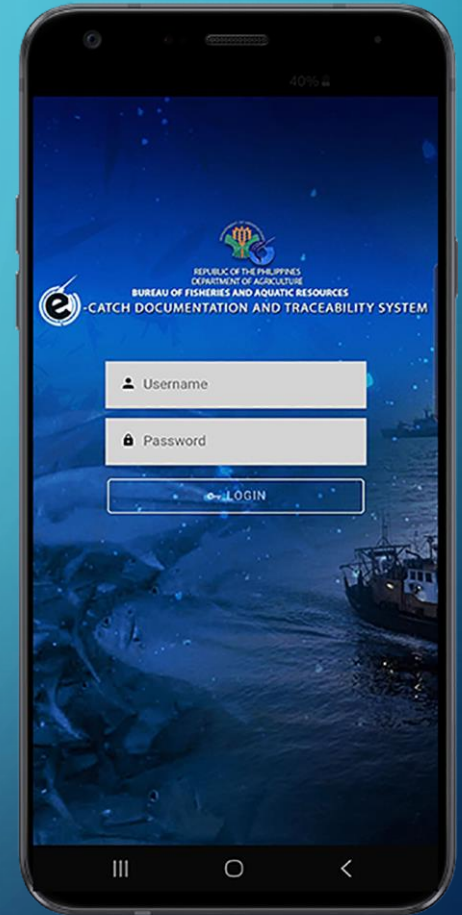
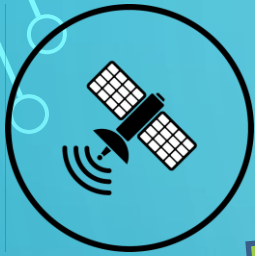
- Electronic Reporting of Fishing Logsheet
- Electronic Submission of Inspection Report
- Online Application and Evaluation of Catch Certificate
- Up-to-date data and report generation



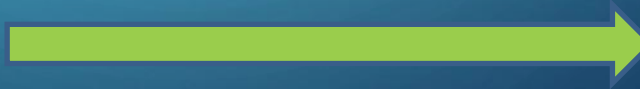
SYSTEM HIGHLIGHTS

1. **Interoperability with existing systems of the Bureau**
2. **Online Submission of Catch Report**
3. **Online Issuance of Catch Origin Landing Declaration**
4. **Real-time Submission of Inspection Report**
5. **Online certification/validation of catch certificate with traceable status**
6. **Live notification via email**

SEA



PORT



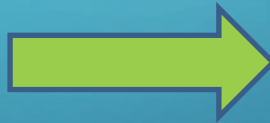
TRANSPORT



FACILITY

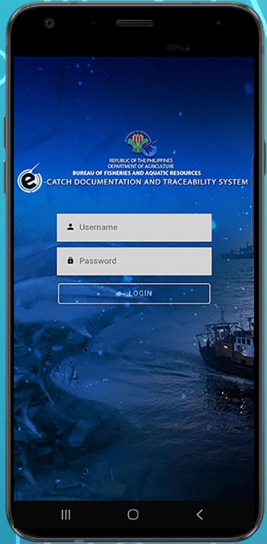


Cold storage Facility

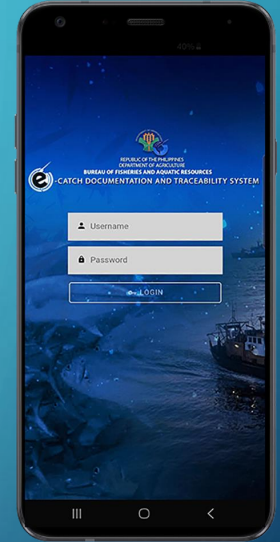
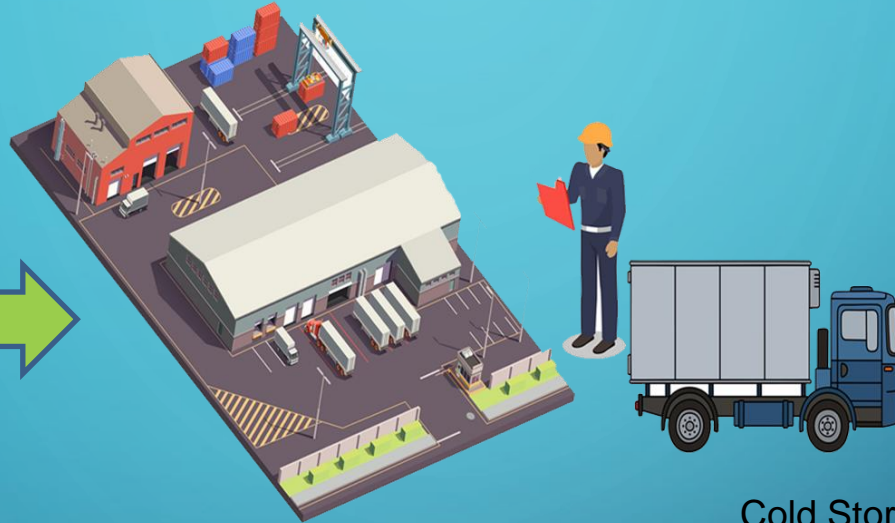


Processing Plant

COLD STORAGE WAREHOUSE



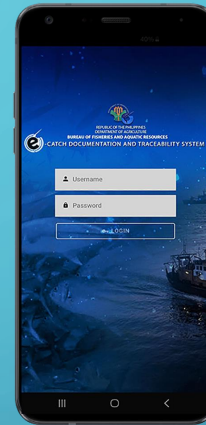
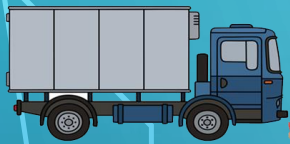
Cold Storage Warehouse
Deposit slip



Cold Storage Warehouse
Withdrawal slip

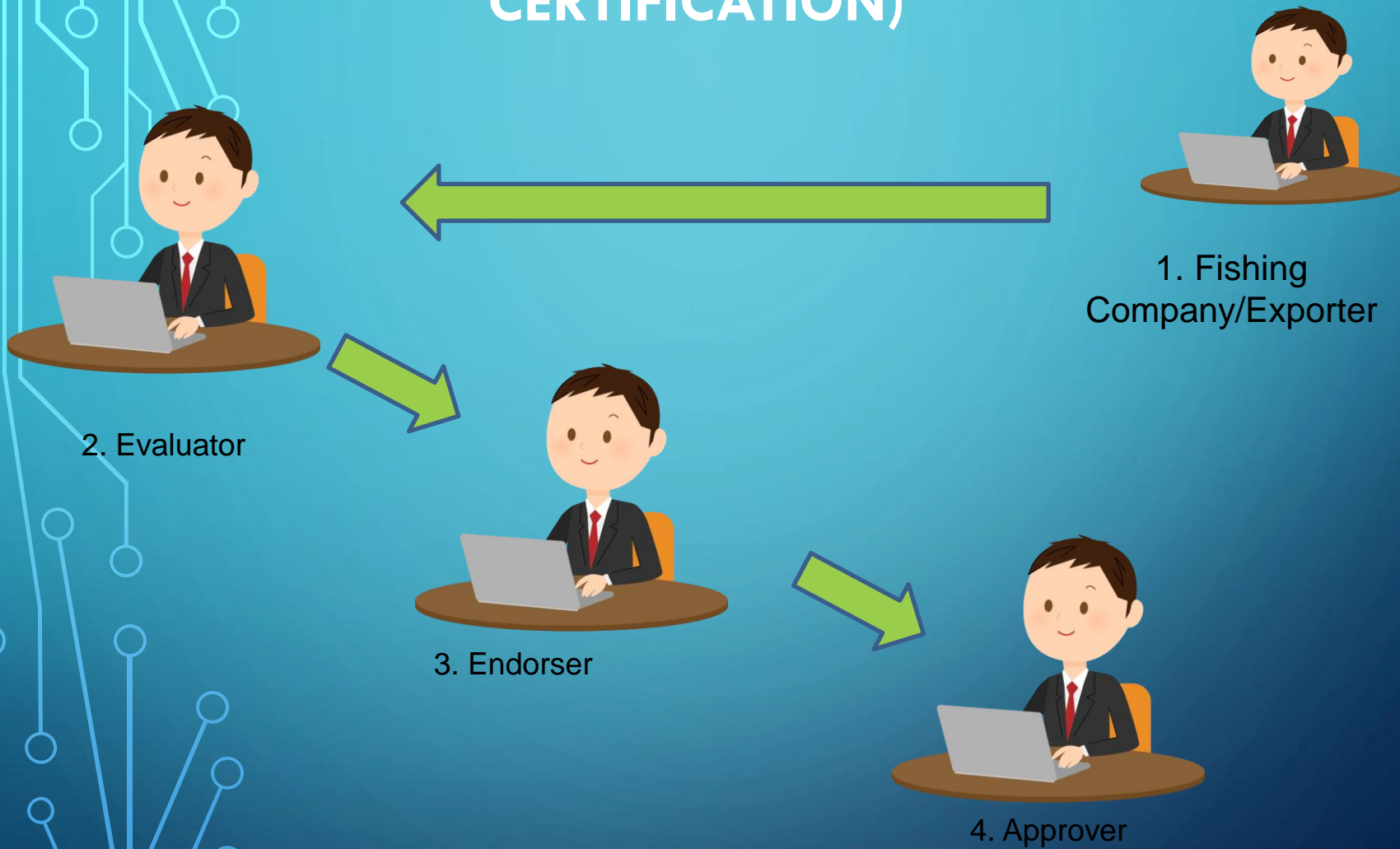


PROCESSING FACILITY



In Plant Monitoring Report

ONLINE APPLICATION & EVALUATION (CATCH CERTIFICATION)



LESSONS LEARNED AND CHALLENGES

- Cooperation and coordination
- Migration of the vessel monitoring system to Geovis system
- E-CDTS is currently being updated
- Integration of new VMS to E-CDTS
- Approval of regulation on traceability is pending



THANK YOU