

# CDS and Traceability System Thailand

**The Regional Workshop to Exchange Information on Catch  
Documentation Scheme and Traceability of Fish and Fishery Products**

**29 – 30 November 2022**

**Thailand**



**Fish Inspection and Quality Control Division  
Department of Fisheries**

# Outline

**Background**

**Laws and Regulations**

**Thai CDS and Traceability System**



# Background: Combating IUUF in Thailand

## Thailand's fishery reform

### Organization

Re-Organization & Cooperation



### Law & Policy

Royal Ordinance on Fisheries B.E. 2558 (2015), 2560 (2017)

Royal Ordinance on Thai Vessels B.E. 2561 (2018)

### Key success in combating IUU fishing

- New fisheries and marine laws
- Overhauled fisheries Management System
- Robust MCS System
- More rigorous law enforcement and deterrent sanctions
- New Enhanced Traceability System
- Preventing Labour exploitation

Traceability & Import Control



Resources and Fleet Management



MCS system



### System & Process



Fish Inspection and Quality Control Division  
Department of Fisheries

## Laws and Regulation

**Royal Ordinance on Fisheries B.E.2558 (2015) and its amendment**

**Thai Vessels Act B.E. 2481 (1938) and its amendments**

**Navigation in the Thai Waters Act B.E. 2456 (1913) and its amendments**



## Thai CDS and Traceability System



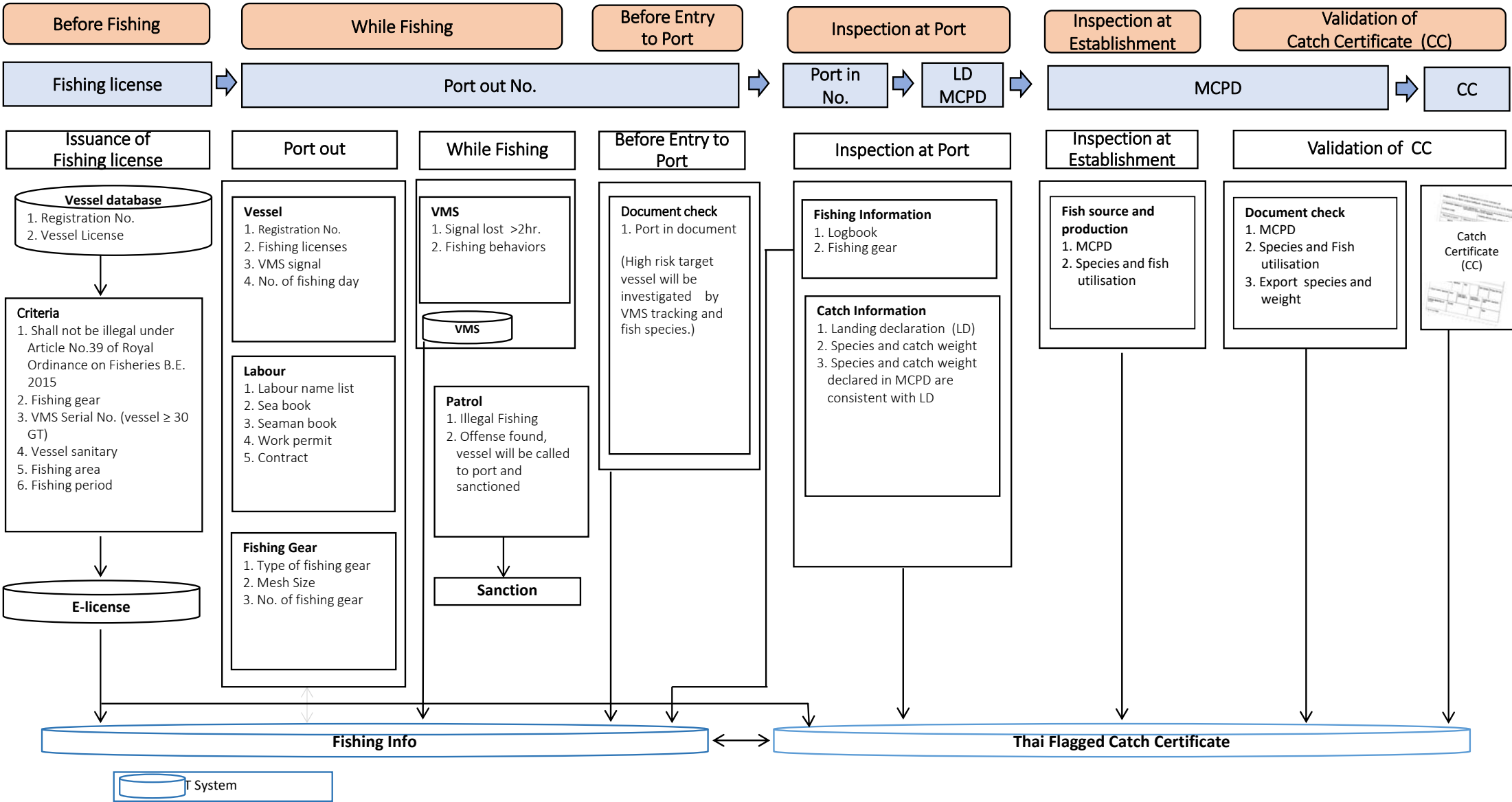
Domestic catch



Imported fish



# Traceability for Thai Flagged Vessels



# Activities of related stakeholders

## Fishing vessels

- Record catch data in logbook and submit to DOF

## Carrier vessels

- Record transshipping data in MCTD and submit to DOF

## Fishing Port

- Record data on every fishing vessel berthed or transshipment or landing of fish at the port
- Check actual landed weight & species of fish
- Issue LD and MCPD

## Buyer

- Record purchased data in MCPD

## Processing Plant

- Implement Traceability system

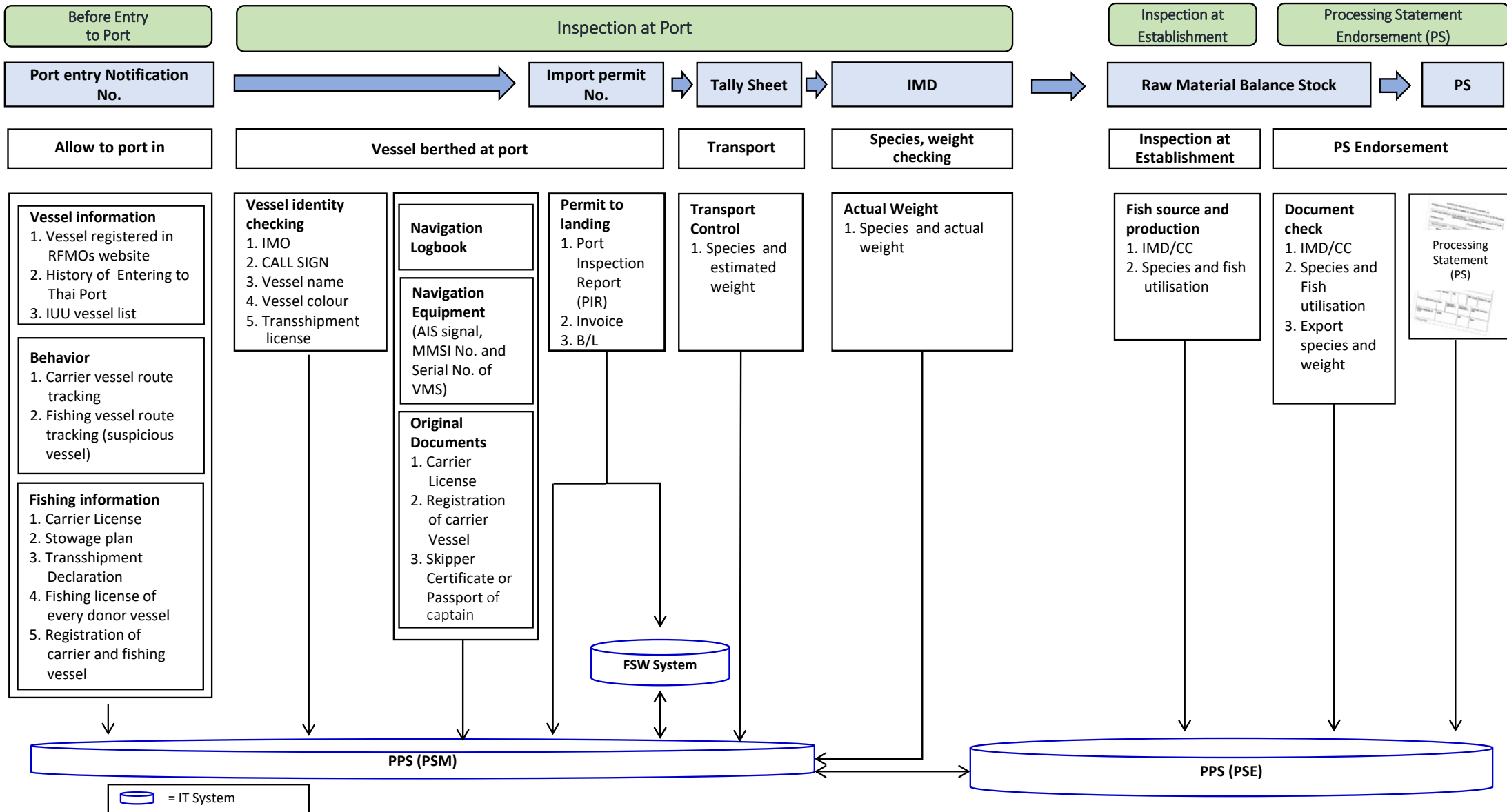
## Exporter

- Present catch certificate or any other document before exportation

## DOF

- Supervise fishing and landing of catch
- Issue catch certificate

# Traceability on Imported Fish





## Activities of related stakeholders

Foreign-  
flagged  
vessels/  
Importer

- Apply for port entry
- present catch certificate or any other document for import permission

Buyer

- Record purchased data in IMD and RMBS

Processing  
Plant

- Implement Traceability system

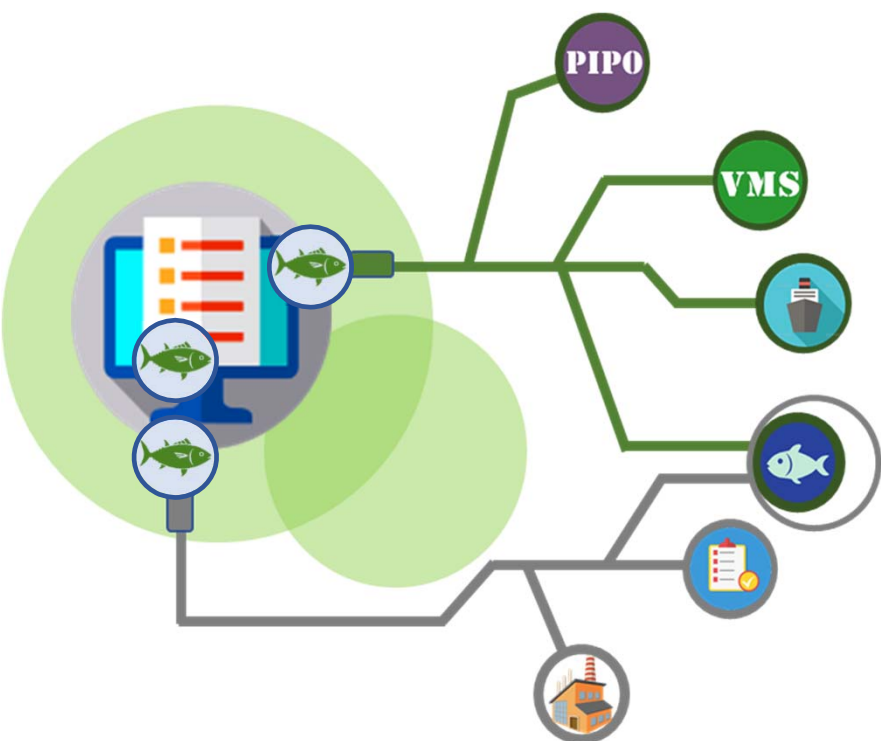
Exporter

- Present catch certificate or any other document before exportation

DOF

- Inspected foreign vessels entering Thai ports according to the PSM
- Issue import permit and IMD
- Issue export permit and Processing statement

# E-TRACEABILITY SYSTEMS



**1 Thai-Flagged Vessels**



**2 Imported Fish**



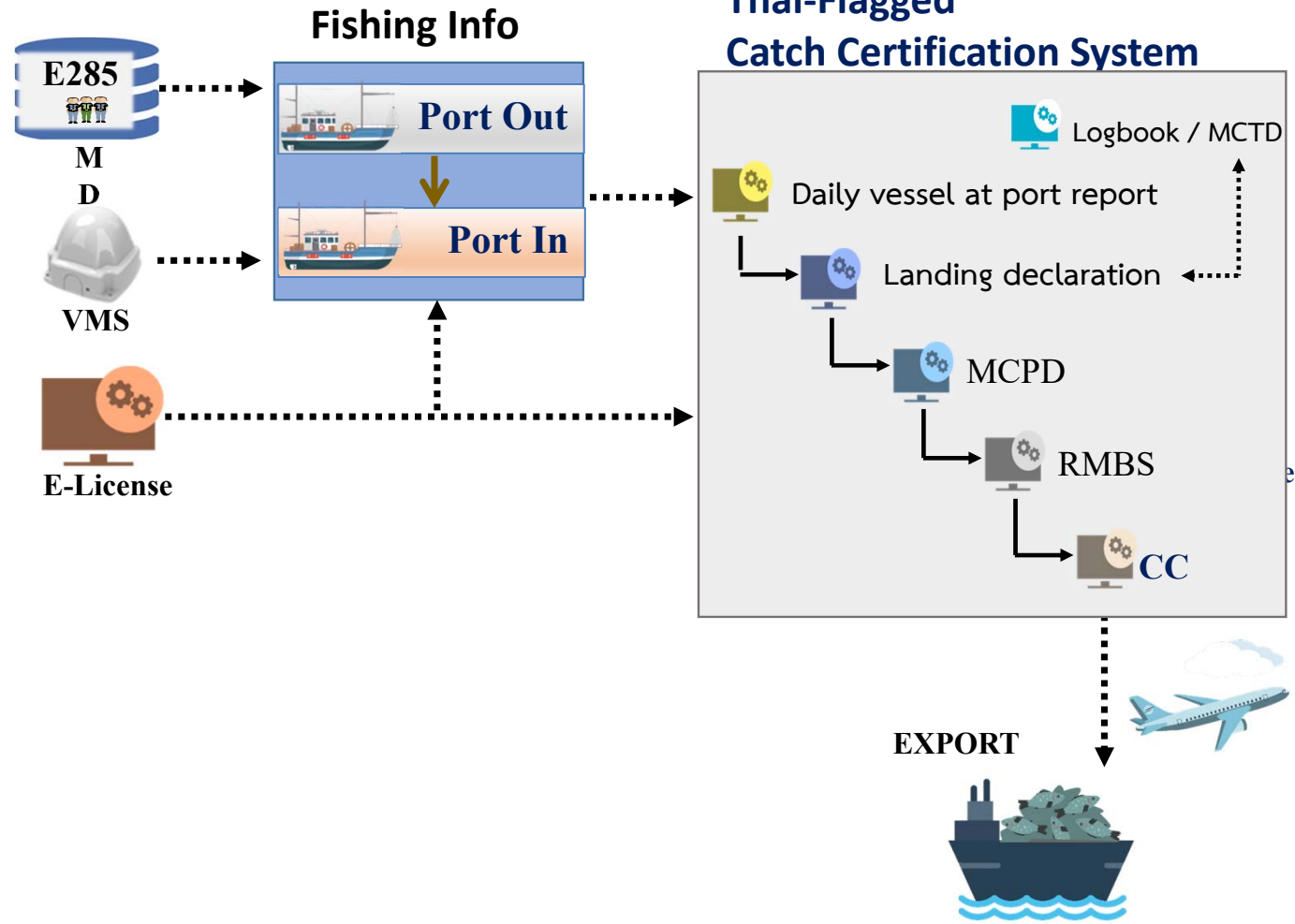
**Implemented along the entire supply chain**

# E-traceability system for monitoring Thai-Flagged Vessels

- IT system - E285**
- Fishing Info
  - VMS
  - E-License
  - Thai-Flagged Catch Certification System

**Strengthen the inter-agencies cooperation**

✓ MOU between DOF and Marine Department

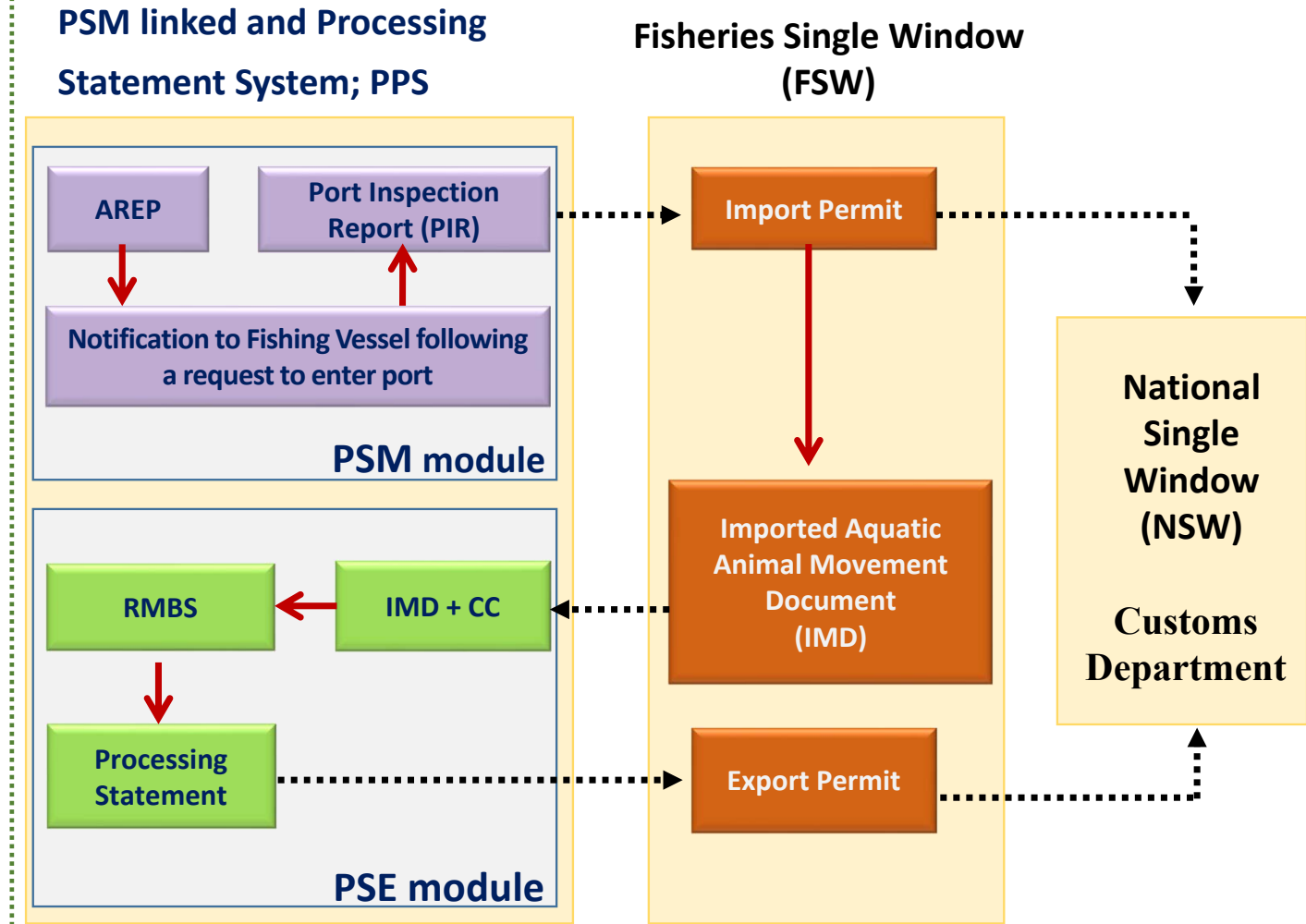


# E-traceability system for monitoring imported fish



## IT system:

- ❖ PSM linked and Processing Statement System; PPS
  - Port State Measures; PSM
  - Processing Statement Endorsement System; PSE
- ❖ Fisheries Single Window; FSW



# Conclusion

---

**CDS and traceability system enable Thailand to trace catch from Thai-flagged vessels as well as imported fish to ensure product traceability at each stage of production, from catch at sea to processing, marketing, and exporting.**

**The electronic traceability systems greatly increase transparency and develops a complete traceability system that ensures no IUU fish enters the international supply chain through Thailand.**

**Thank you for your attention**

**Supinda Chongsuebsuk**

**supindac@dof.mail.go.th**

**Department of Fisheries, Thailand**

**November 2022**



**Fish Inspection and Quality Control Division  
Department of Fisheries**